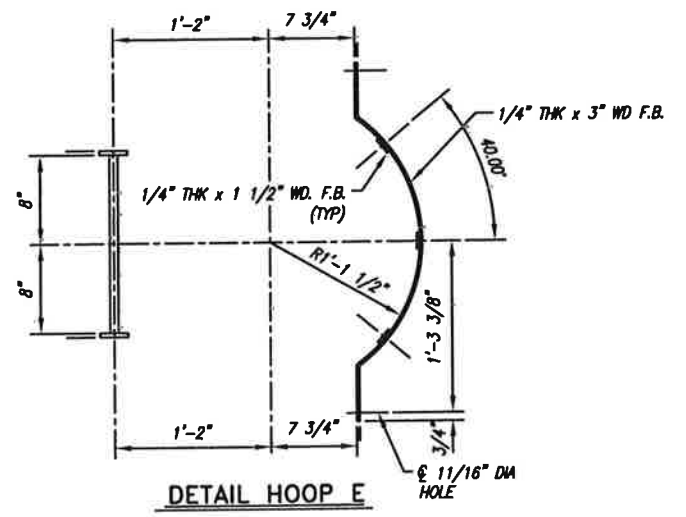
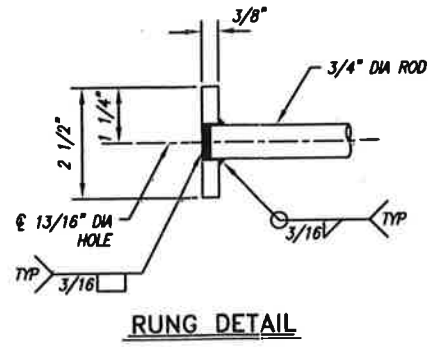


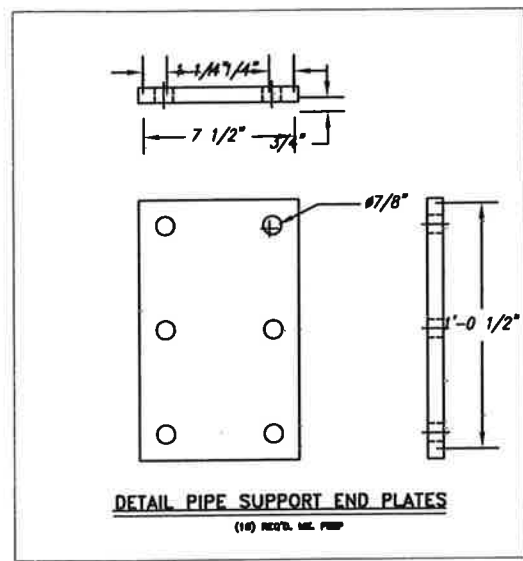
DETAIL HOOP A
Ø 11/16" DIA HOLE



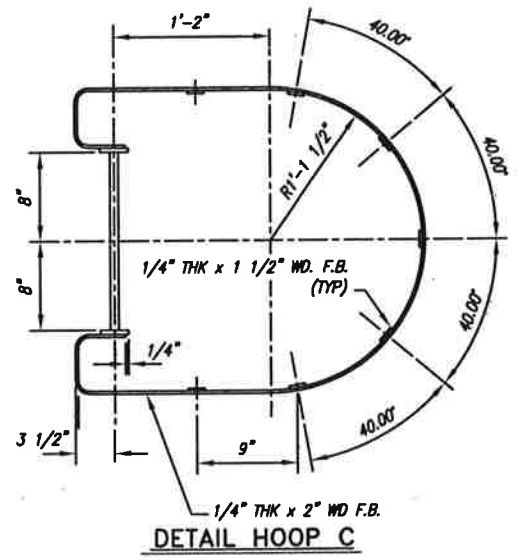
DETAIL HOOP E
Ø 11/16" DIA HOLE



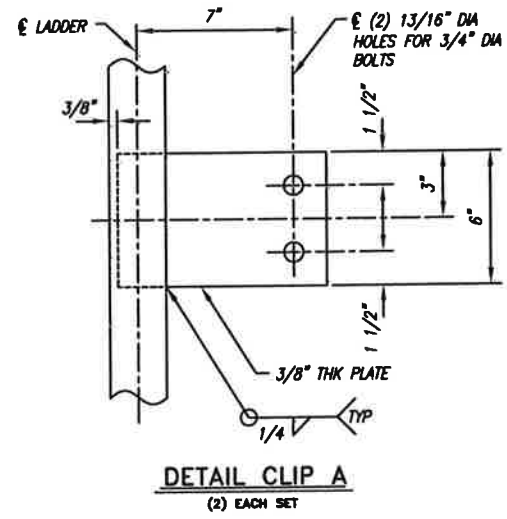
RUNG DETAIL



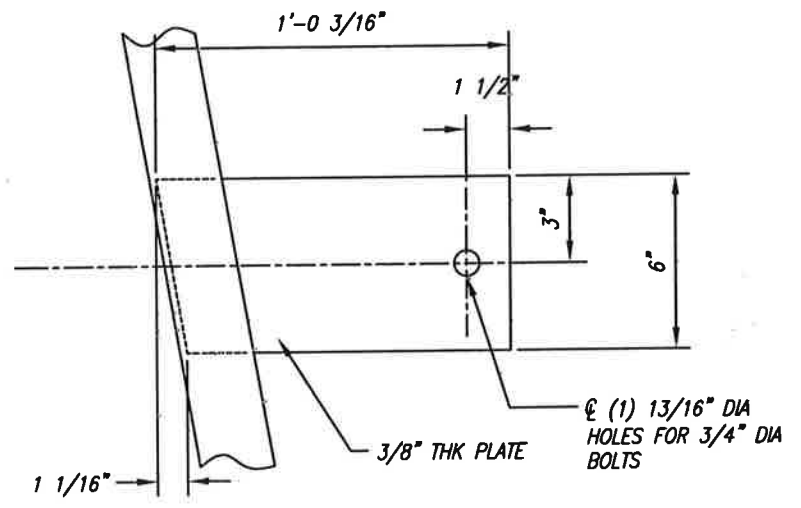
DETAIL PIPE SUPPORT END PLATES
(10) REQ'D. SEE PLAN



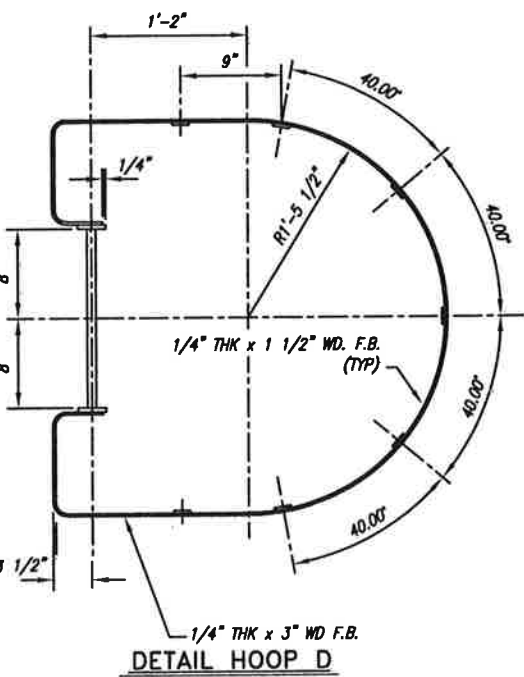
DETAIL HOOP C
Ø 11/16" DIA HOLE



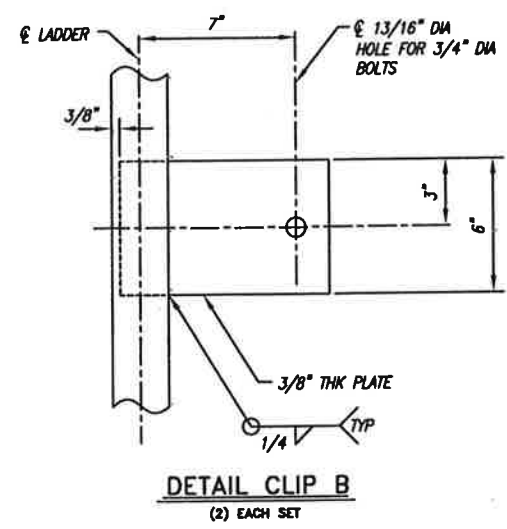
DETAIL CLIP A
(2) EACH SET



DETAIL CLIP C
(2) EACH SET



DETAIL HOOP D
Ø 11/16" DIA HOLE

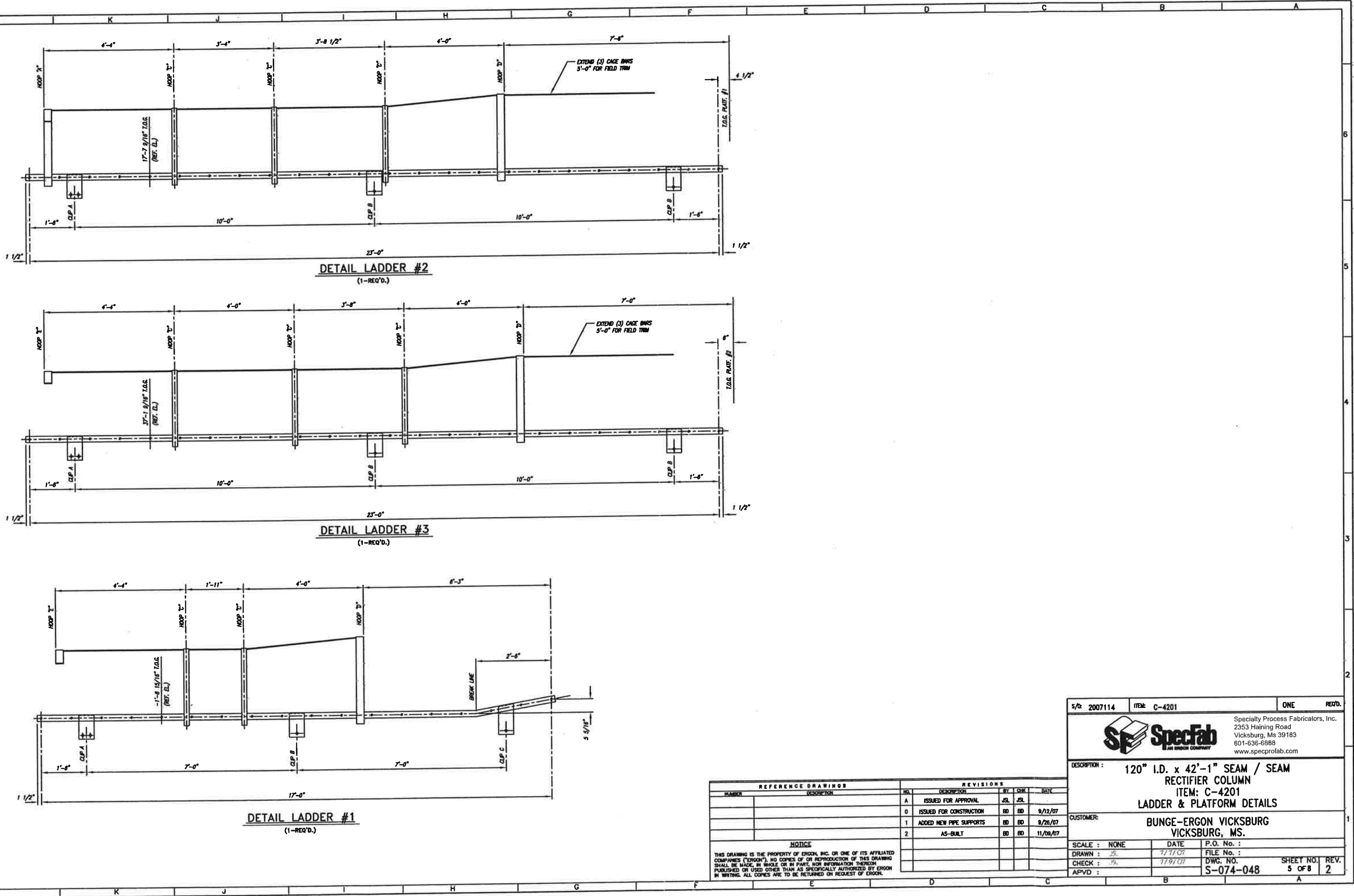


DETAIL CLIP B
(2) EACH SET

REFERENCE DRAWINGS		REVISIONS				
NUMBER	DESCRIPTION	NO.	DESCRIPTION	BY	CHK	DATE
A	ISSUED FOR APPROVAL	JSL	JSL			
0	ISSUED FOR CONSTRUCTION	BD	BD			9/12/07
1	ADDED NEW PIPE SUPPORTS	BD	BD			9/26/07
2	AS-BUILT	BD	BD			11/09/07

NOTICE
THIS DRAWING IS THE PROPERTY OF ERCON, INC. OR ONE OF ITS AFFILIATED COMPANIES ("ERCON"). NO COPIES OF OR REPRODUCTION OF THIS DRAWING SHALL BE MADE, IN WHOLE OR IN PART, FOR INFORMATION THEREON PUBLISHED OR USED OTHER THAN AS SPECIFICALLY AUTHORIZED BY ERCON IN WRITING. ALL COPIES ARE TO BE RETURNED ON REQUEST OF ERCON.

S/C 2007114	ITEM: C-4201	ONE	REQ'D.
SpecFab AN ERCON COMPANY		Specialty Process Fabricators, Inc. 2353 Haining Road Vicksburg, Ms 39183 601-636-6888 www.specprofab.com	
DESCRIPTION: 120" I.D. x 42'-1" SEAM / SEAM RECTIFIER COLUMN ITEM: C-4201 LADDER & PLATFORM DETAILS			
CUSTOMER: BUNGE-ERCON VICKSBURG VICKSBURG, MS.			
SCALE: NONE	DATE: 7/7/07	P.O. No.:	
DRAWN: JS	FILE No.:	DWG. No.:	SHEET NO. REV.
CHECK: JS	7/9/07	S-074-048	6 OF 8 2
APVD:			



DETAIL LADDER #2
(1-REQ'D.)

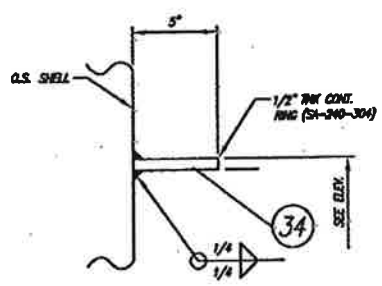
DETAIL LADDER #3
(1-REQ'D.)

DETAIL LADDER #1
(1-REQ'D.)

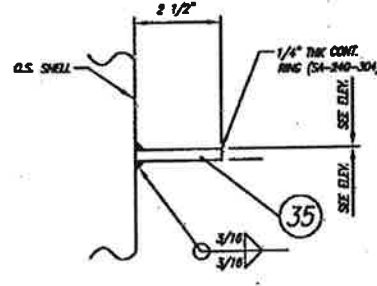
REFERENCE DRAWINGS		REVISIONS			
NUMBER	DESCRIPTION	NO.	DESCRIPTION	BY	DATE
		A	ISSUED FOR APPROVAL	JSL	JSL
		0	ISSUED FOR CONSTRUCTION	BD	BD 9/12/07
		1	ADDED NEW PIPE SUPPORTS	BD	BD 9/26/07
		2	AS-BUILT	BD	BD 11/09/07

NOTICE
THIS DRAWING IS THE PROPERTY OF ERCON, INC. OR ONE OF ITS AFFILIATED COMPANIES ("ERCON"). NO COPIES OF OR REPRODUCTION OF THIS DRAWING SHALL BE MADE, IN WHOLE OR IN PART, FOR INFORMATION THEREON PUBLISHED OR USED OTHER THAN AS SPECIFICALLY AUTHORIZED BY ERCON IN WRITING. ALL COPIES ARE TO BE RETURNED ON REQUEST OF ERCON.

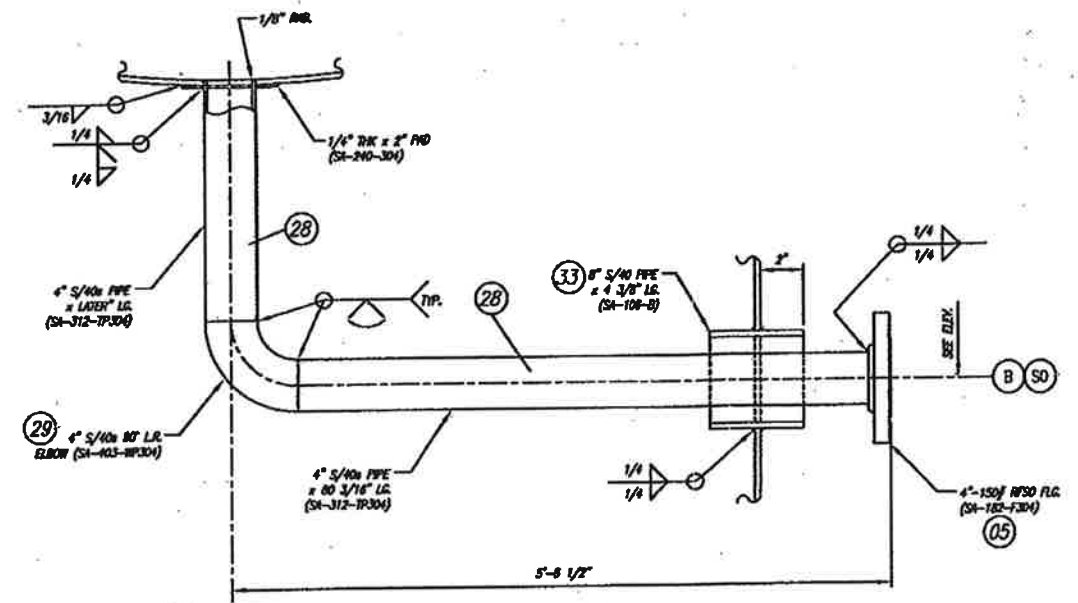
S/C: 2007114	ITEM: C-4201	ONE	REQ'D.
SpecFab AN ERCON COMPANY		Specialty Process Fabricators, Inc. 2353 Haining Road Vicksburg, Ms 39183 601-636-6888 www.specprofab.com	
DESCRIPTION: 120" I.D. x 42'-1" SEAM / SEAM RECTIFIER COLUMN ITEM: C-4201 LADDER & PLATFORM DETAILS			
CUSTOMER: BUNGE-ERCON VICKSBURG VICKSBURG, MS.			
SCALE: NONE	DATE: 7/7/07	P.O. No.:	
DRAWN: JS	11/9/07	FILE No.:	SHEET NO. REV.
CHECK: JS		DWG. NO. S-074-048	5 OF 8 2
APVD:			



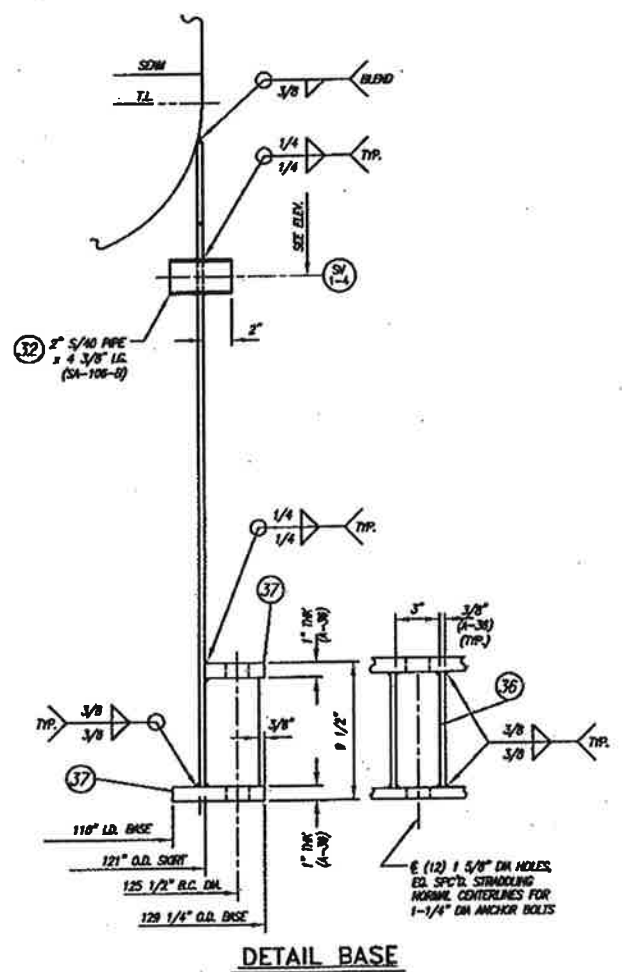
VSR #1 THRU 4 DETAIL
(4-REQ'D.)



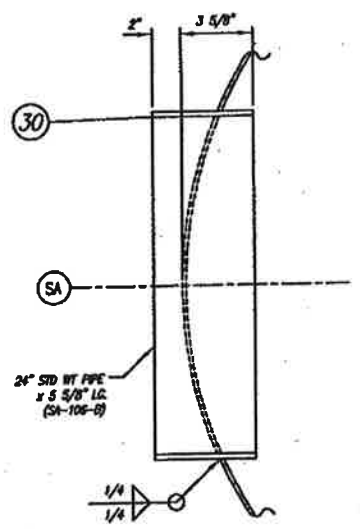
ISR #1 & 2 DETAIL
(2-REQ'D.)



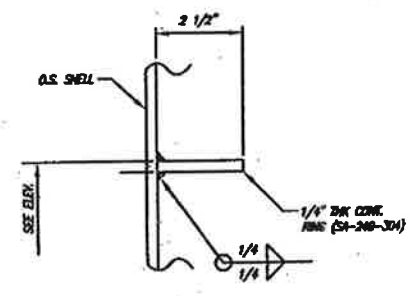
NOZZLE "B" DETAIL
(1-REQ'D.)



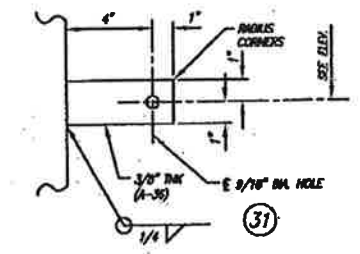
DETAIL BASE



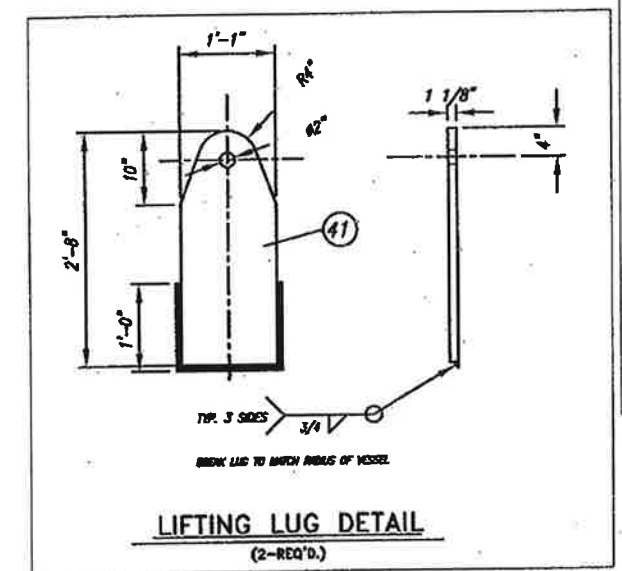
DETAIL SKIRT ACCESS
(1-REQ'D.)



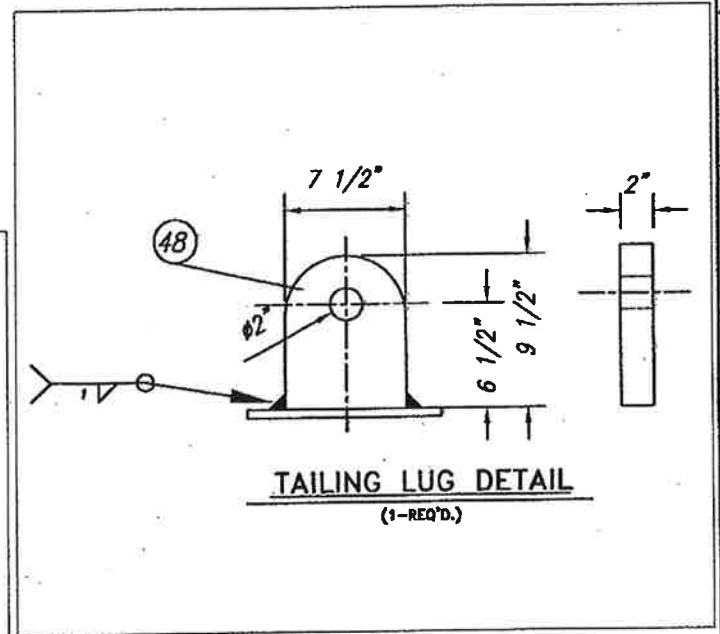
TRAY SUPPORT RING DETAIL
(20-REQ'D.)



GROUNDING LUG DETAIL
(2-REQ'D.)



LIFTING LUG DETAIL
(2-REQ'D.)

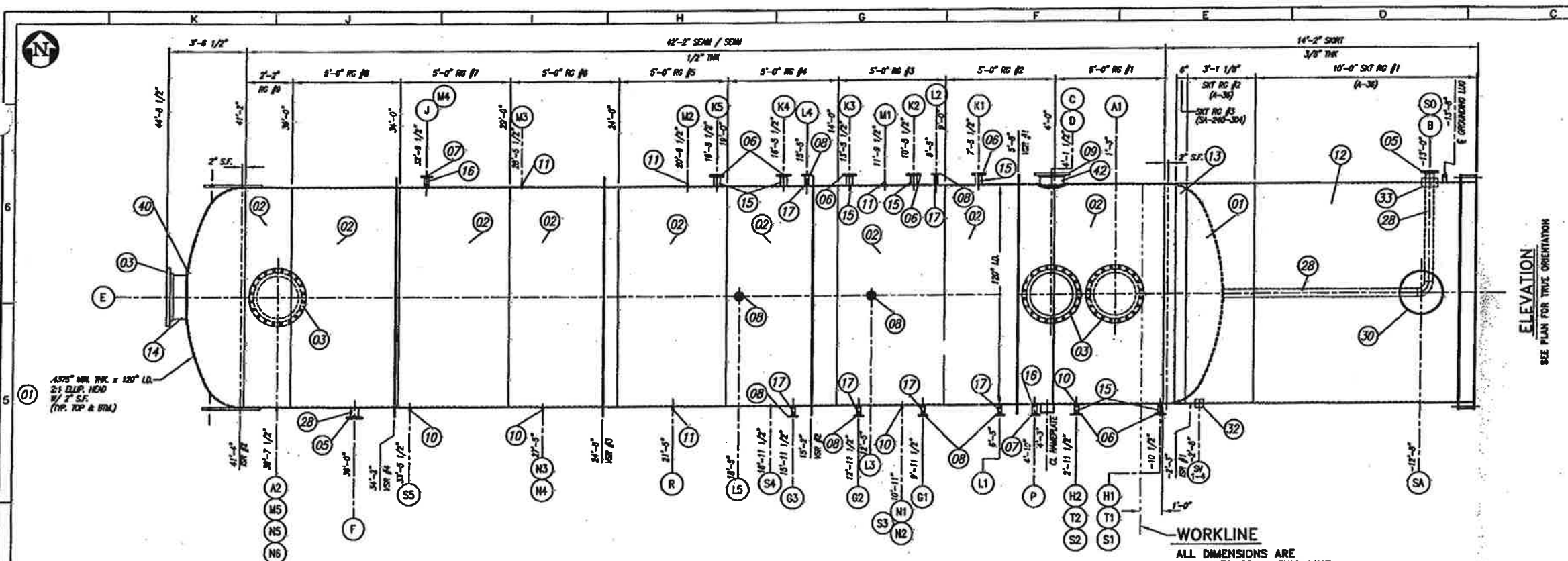


TAILING LUG DETAIL
(1-REQ'D.)

REFERENCE DRAWINGS		REVISIONS			
NUMBER	DESCRIPTION	NO.	DESCRIPTION	BY	DATE
B	ISSUED FOR APPROVAL	JSL	JSL		
D	ISSUED FOR CONSTRUCTION	JSL	JSL		4/23/07

NOTICE
THIS DRAWING IS THE PROPERTY OF ERCON, INC. OR ONE OF ITS AFFILIATED COMPANIES (ERCON). NO COPIES OR REPRODUCTIONS OF THIS DRAWING SHALL BE MADE, IN WHOLE OR IN PART, NOR INFORMATION THEREON PUBLISHED OR USED OTHER THAN AS SPECIFICALLY AUTHORIZED BY ERCON IN WRITING. ALL COPIES ARE TO BE RETURNED ON REQUEST OF ERCON.

S/Nr: 2007114	ITEM: C-4201	ONE	REV'D.
SpecFab Specialty Process Fabricators, Inc. 2353 Haining Road Vicksburg, Ms 39183 601-636-6888 www.specprofab.com			
DESCRIPTION: 120" I.D. x 42'-1" SEAM / SEAM RECTIFIER COLUMN ITEM: C-4201			
CUSTOMER: ERCON REFINING VICKSBURG, MS.			
SCALE: NONE	DATE: 2/27/07	P.O. No.: 61310-450014663	
DRAWN: JSL	FILE No.: 2007114		
CHECK: JSL	DWG. No. V-074-105	SHEET NO. 2 OF 6	REV. 0
APVD:			



ELEVATION
SEE PLAN FOR TRUE ORIENTATION

WORKLINE
ALL DIMENSIONS ARE MEASURED FROM THIS LINE UNLESS NOTED OTHERWISE.

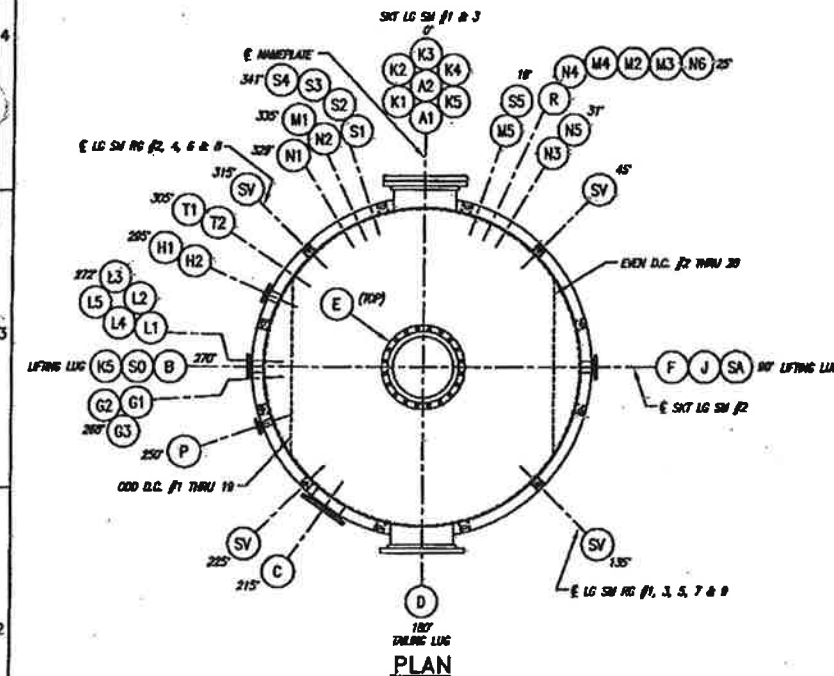
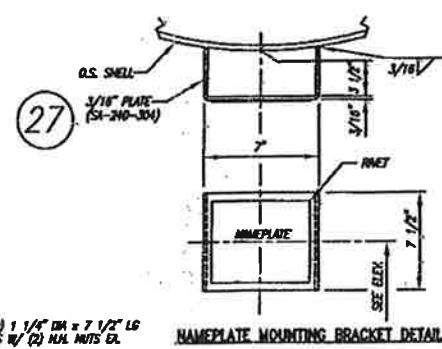
EST. WEIGHTS & CAPACITY

FABRICATED WEIGHT	43,750 LBS.
LIFT WEIGHT	84,813 LBS.
HYDRO WEIGHT	269,135 LBS.
CAPACITY	26,928 GALS.
INSULATION	5,368 LBS.

- GENERAL NOTES:**
- 1) FLANGE BOLT HOLES TO STANDARD VESSEL CENTERLINES UNLESS NOTED OTHERWISE.
 - 2) DRILL & TAP 1/4" TELLERIE HOLE IN REINFORCING PAD.
 - 3) OUTSIDE PROJECTION SHOWN IN THE NOZZLE SCHEDULE IS FROM VESSEL O.D. UNLESS NOTED OTHERWISE.
 - 4) INSIDE PROJECTION SHOWN IN THE NOZZLE SCHEDULE IS MINIMUM ONLY.
 - 5) ALL NOZZLES SHALL BE ACCURATELY PROTECTED AND COVERED FOR SHIPMENT. INSTALL 1/2" THK. PLATEWOOD PROTECTORS ON FLANGES WITHOUT BLIND FLANGES. A MINIMUM OF (4) 3/8" DIA BOLTS FOR 12" AND SMALLER AND (8) 3/8" DIA BOLTS FOR LARGER FLANGES.
 - 6) VESSEL TO BE DRAINED, DRIED AND CLEANED BEFORE SHIPMENT.
 - 7) ALL FLANGE FACE FINISHES ARE TO BE 125-250 RL.
 - 8) PAINT OR SENSITIVE P.C. NUMBER & ITEM NO. WITH 6" HIGH LETTERS ON INSIDE OF VESSEL.
 - 9) ALL INTERNALS SHALL BE REMOVABLE THRU VESSEL MANWAYS.
 - 10) BLIND CONNECTIONS FURNISHED WITH BLIND FLANGE, STUDS AND (2) GASKETS.
 - 11) 300L ELECTRODES TO BE USED FOR ALL WELDING.
 - 12) PT LIFTING LUGS.
 - 14) WAMP LABELED BY HEADS.

ITEM # C4201 OD 120"

PO#	61310-4500140663
SHELL THICKNESS	1/2"
HEAD THICKNESS	7/16" MIN.
BARE VESSEL WT	43,750
VESSEL LIFT WT	84,813
MAX HYDRO PRESS	125 PSIG



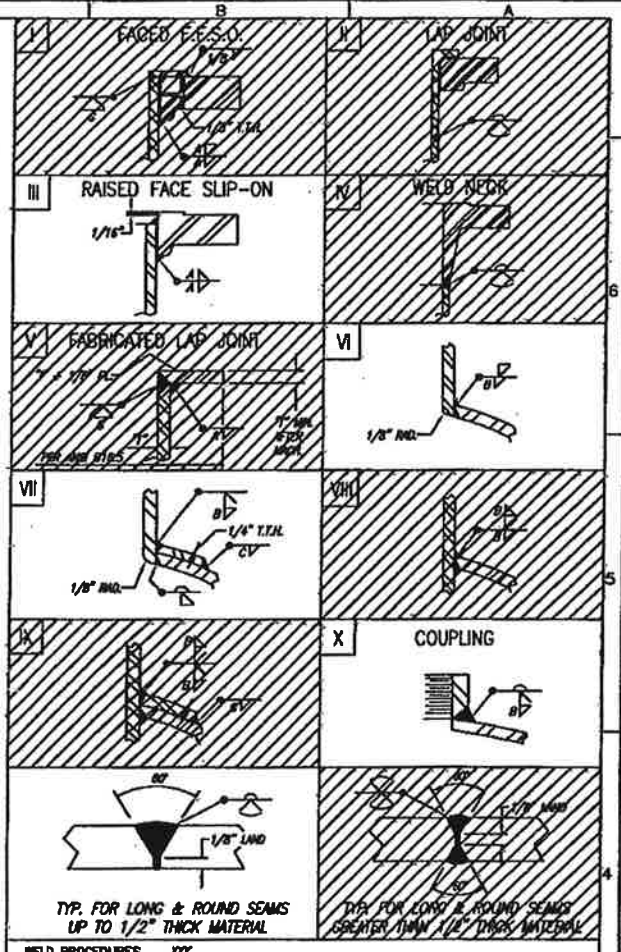
MARK NO.	SERVICE	SIZE	RATING	TYPE	MATERIAL	WALL	NECK	LG.	MATL.	THK. X WD.	MATL.	REINFORCING PAD	PROJECTION	WELD DETAIL	WELD SIZE	NOTES	
SO	1	SHORT OPENING	8"		SEE DTL.												
SA	1	SHORT ACCESS	24"		SEE DTL.												
SV	2	SHORT MONTS	2"		SEE DTL.												
TI/2	2	LEVEL GAUGE	3/4"	3000#	HALF CPLG.	SA-182-F304							FLUSH		1/4"		
SI/5	5	SPWNE	3/4"	3000#	HALF CPLG.	SA-182-F304							FLUSH		1/4"	W/ PLUG	
R	1	SAMPLE	1/2"	3000#	HALF CPLG.	SA-182-F304							FLUSH		1/4"		
P	1	PSY	2"	150#	RFSO	SA-182-F304	S/40#					SA-312-TP304		W	1/4"	1/4"	
NI/8	8	TC II	3/4"	3000#	HALF CPLG.	SA-182-F304							FLUSH		1/4"		
NI/5	5	PK FT	1/2"	3000#	HALF CPLG.	SA-182-F304							FLUSH		1/4"		
LI/5	5	LIQUID FUSSELS	1 1/2"	150#	RFSO	SA-182-F304	S/40#					SA-312-TP304		W	3/16"	3/16"	
VI/5	5	WAPOR FUSSELS	3"	150#	RFSO	SA-182-F304	S/40#					SA-312-TP304	1/4" x 2"	W	1/4"	1/4"	3/16"
J	1	REBURN INLET	2"	150#	RFSO	SA-182-F304	S/40#					SA-312-TP304		W	3/16"	3/16"	
NI/2	2	LEVEL TRANSMITTER	3"	150#	RFSO	SA-182-F304	S/40#					SA-312-TP304	1/4" x 2"	W	1/4"	1/4"	3/16"
CI/3	3	RESOVN	1 1/2"	150#	RFSO	SA-182-F304	S/40#					SA-312-TP304		W	3/16"	3/16"	
F	1	REFLEX	4"	150#	RFSO	SA-182-F304	S/40#					SA-312-TP304	1/4" x 2"	W	1/4"	1/4"	3/16"
O	1	WAPOR OUTLET	24"	150#	RFSO	SA-182-F304	S/20					SA-312-TP304	3/8" x 3"	W	3/8"	3/8"	5/16"
O	1	WAPOR INLET	24"	150#	RFSO	SA-182-F304	S/20					SA-312-TP304	1/2" x 4"	W	3/8"	3/8"	5/16"
O	1	WAPOR INLET	12"	150#	RFSO	SA-182-F304	S/40#					SA-312-TP304	1/2" x 4"	W	3/8"	3/8"	5/16"
O	1	LIQUID OUTLET	4"	150#	RFSO	SA-182-F304	S/40#					SA-312-TP304		W	3/8"	1/4"	3/16"
A2	1	MANWAY	24"	150#	RFSO	SEE DTL.						SA-312-TP304	1/2" x 4"	W	3/8"	3/8"	5/16"
A1	1	MANWAY	24"	150#	RFSO	SA-182-F304	S/20					SA-312-TP304	1/2" x 4"	W	3/8"	3/8"	5/16"

CERTIFIED BY
SPECIALTY PROCESS FABRICATORS, INC

SHELL MAWP: 86 PSIG AT 300 °F
SHELL MAEP: 15 PSIG AT 300 °F
SHELL MOMT: -5 °F AT 86 PSIG

SERIAL: XX YEAR BUILT: 2007

Specfab
SPECIALTY PROCESS FABRICATORS, INC.
VICKSBURG, MS 39183



SPECIFICATIONS

CONSTRUCTION CODE: ASME CODE SECTION VIII, DIV. 1, 2001 EDITION, 2008 ADDENDA

YEAR BUILT: 2007

DESIGN PRESSURE INTERNAL: 50 PSIG @ TEMP. -5/200 °F MIN/MAX

DESIGN PRESSURE EXTERNAL: 15 PSIG @ TEMP. -5/200 °F MIN/MAX

HYDRO PRESSURE INTERNAL: 125 PSIG

CORROSION ALLOWANCE: NONE

SHELL MATL. SPEC: SA-240-304

FLANGE MATL. SPEC: SA-182-F304

PIPE MATL. SPEC: SA-312-TP304

REPAD MATL. SPEC: SA-240-304

NDMT: -5

GASKET DESC: GIMLOCK 3000, PTFE OR EQUAL OR EPDM

INSULATION DESC: 3" THK (BY OTHERS)

INSPECTION BY: HSB CO. & CUSTOMER

SANDBLAST: C.S. (ONLY) - PER SSPC-SF5 (COMMERCIAL BLAST)

PAINT: C.S. (ONLY) - PRIME COAT WITH ALKYLID PRIMER OR WATER BASED EPOXY ACRYLIC

Specfab Specialty Process Fabricators, Inc.
2353 Haining Road
Vicksburg, MS 39183
601-636-6888
www.specfab.com

DESCRIPTION: 120" I.D. x 42'-1" SEAM / SEAM
RECTIFIER COLUMN
ITEM NO.: C4201

CUSTOMER: ERGON REFINING
VICKSBURG, MS.

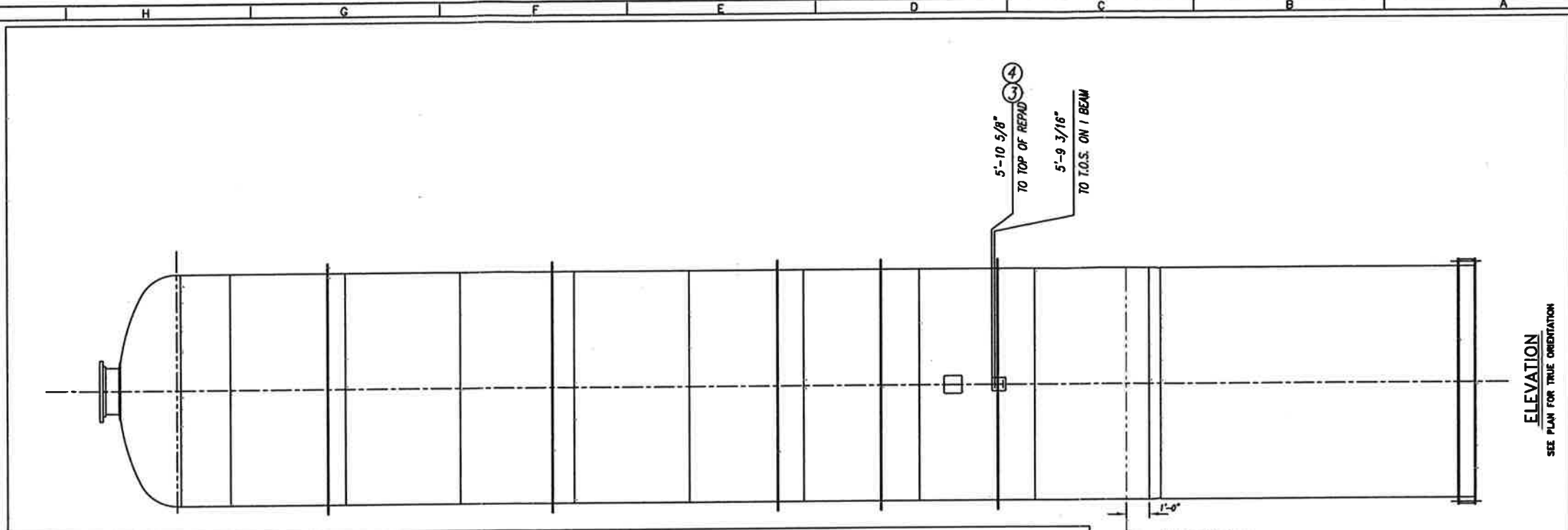
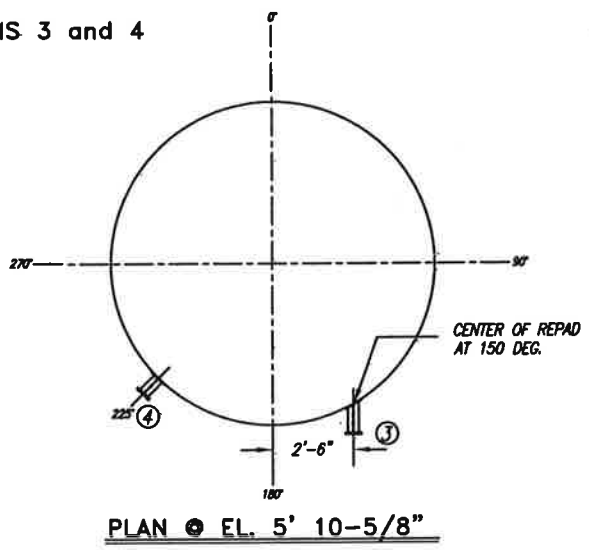
SCALE: N.T.S. DATE: 2/24/07 P.O. No.: 61310-4500140663
DRAWN BY: JS. FILE No.: 2007114
CHECK BY: JS. 3/11/07 DWG. NO.: V-074-105 SHEET NO.: 1 OF 6
APVD: REV. 0

REFERENCE DRAWINGS

NO.	DESCRIPTION	BY	CHK.	DATE
B	ISSUED FOR APPROVAL	JS.	JS.	
O	ISSUED FOR CONSTRUCTION	JS.	JS.	4/23/07

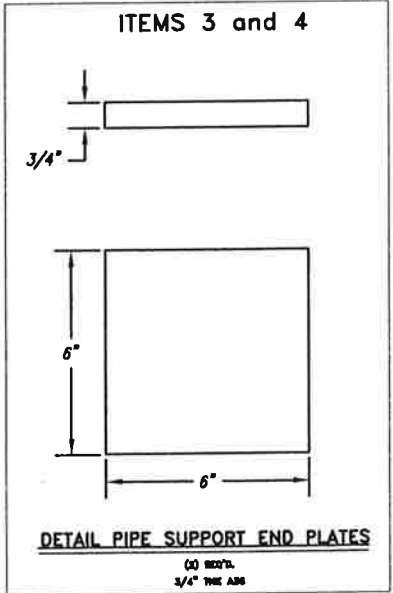
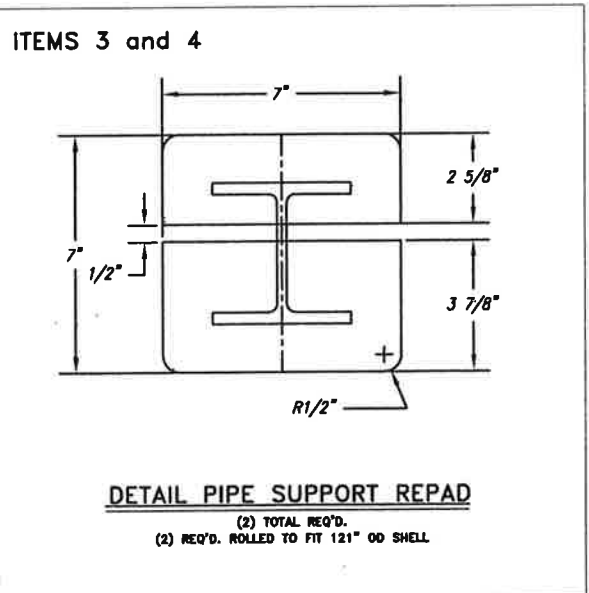
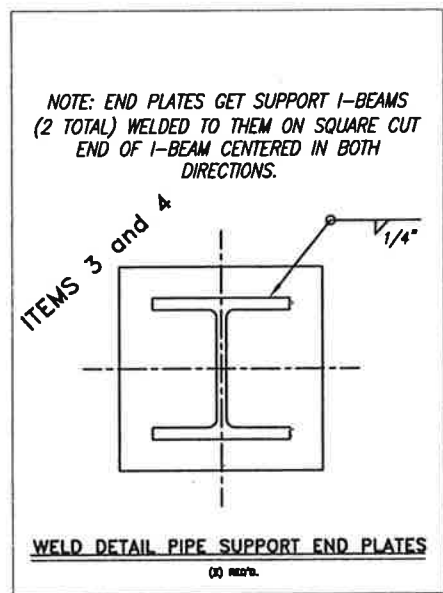
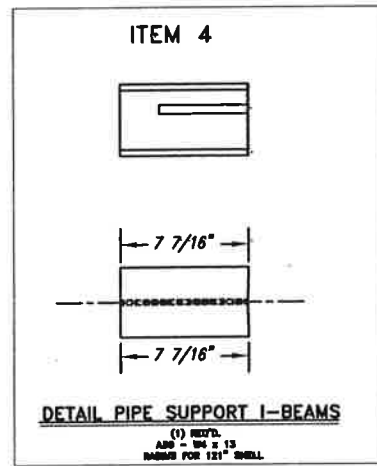
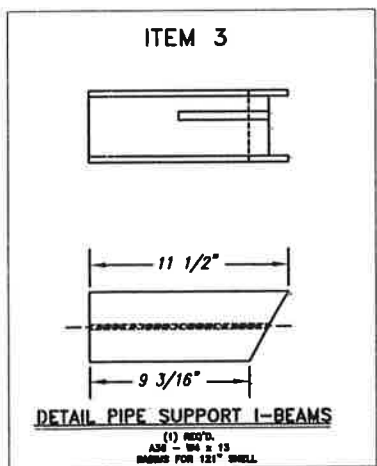
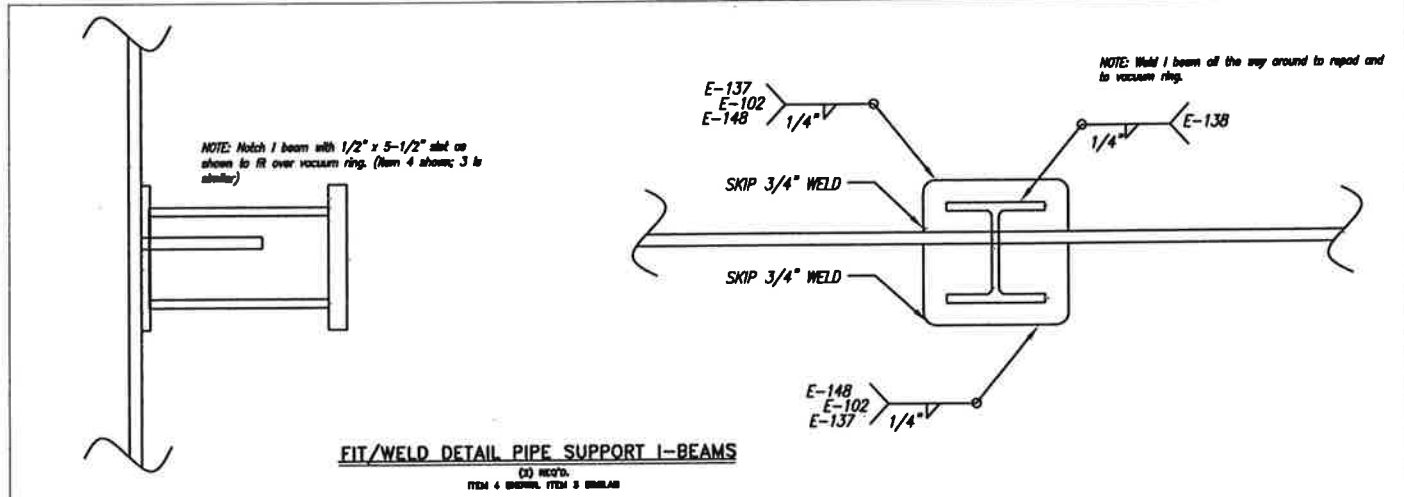
NOTICE
THIS DRAWING IS THE PROPERTY OF ERGON, INC. OR ONE OF ITS AFFILIATED COMPANIES ("ERGON"). NO COPIES OR REPRODUCTION OF THIS DRAWING SHALL BE MADE, IN WHOLE OR IN PART, NOR INFORMATION THEREOF PUBLISHED OR USED OTHER THAN AS SPECIFICALLY AUTHORIZED BY ERGON IN WRITING. ALL COPIES ARE TO BE RETURNED ON REQUEST OF ERGON.

ITEMS 3 and 4



NOTE: BOTH DETAILS BELOW SHOW I-BEAM NOTCHED TO FIT OVER VACUUM SUPPORT RING.

WORKLINE
ALL DIMENSIONS ARE MEASURED FROM THIS LINE UNLESS NOTED OTHERWISE.



THIS WHOLE SHEET WAS ADDED AT REV 1

REFERENCE DRAWINGS		REVISIONS				
NUMBER	DESCRIPTION	NO.	DESCRIPTION	BY	CHK	DATE
A	ISSUED FOR APPROVAL	JSL	JSL			
0	ISSUED FOR CONSTRUCTION	BD	BD			9/12/07
1	ADDED NEW PIPE SUPPORTS	BD	BD			9/26/07
2	AS-BUILT	BD	BD			11/09/07

NOTICE
THIS DRAWING IS THE PROPERTY OF ERGON, INC. OR ONE OF ITS AFFILIATED COMPANIES ("ERGON"). NO COPIES OF OR REPRODUCTION OF THIS DRAWING SHALL BE MADE, IN WHOLE OR IN PART, FOR INFORMATION THEREON PUBLISHED OR USED OTHER THAN AS SPECIFICALLY AUTHORIZED BY ERGON IN WRITING. ALL COPIES ARE TO BE RETURNED ON REQUEST OF ERGON.

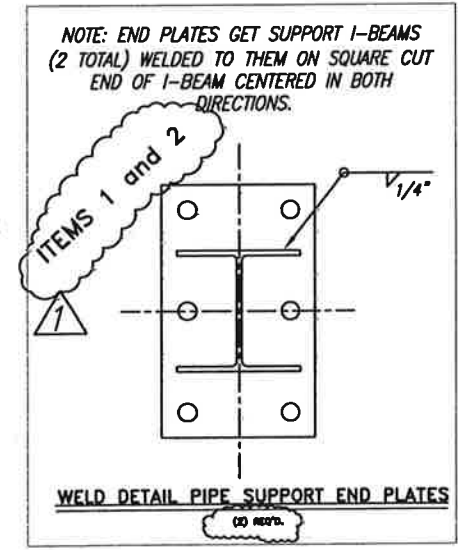
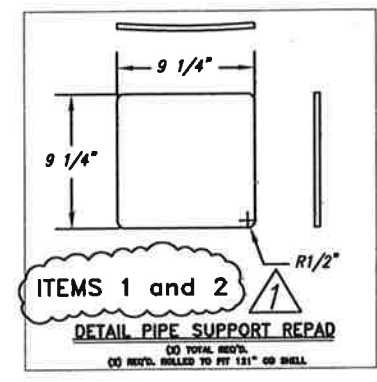
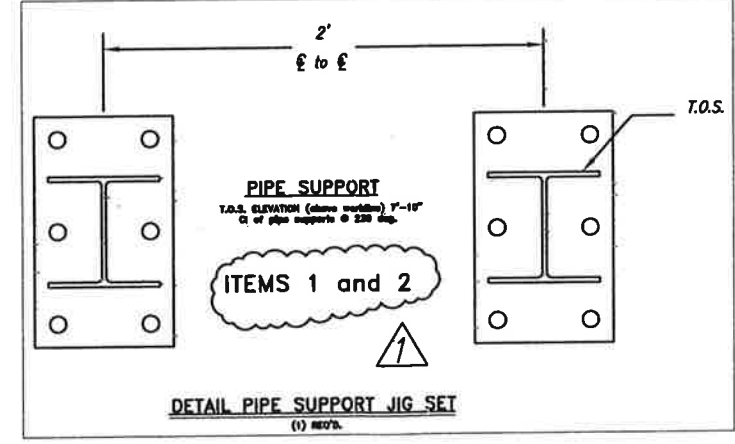
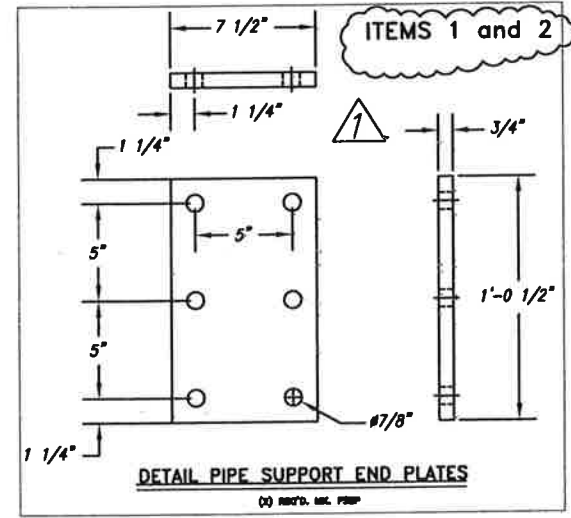
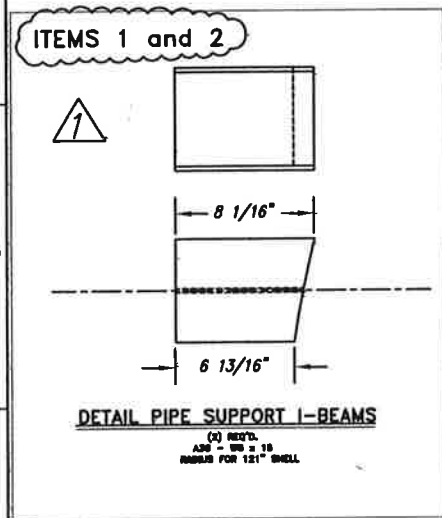
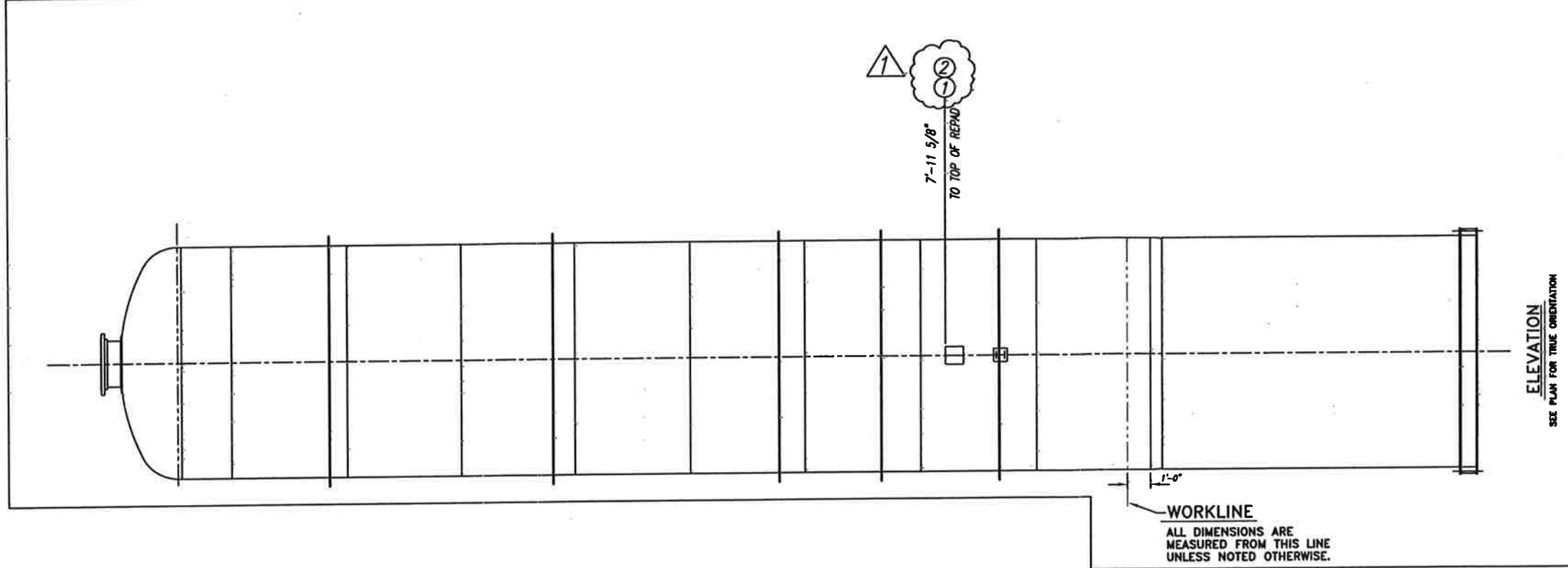
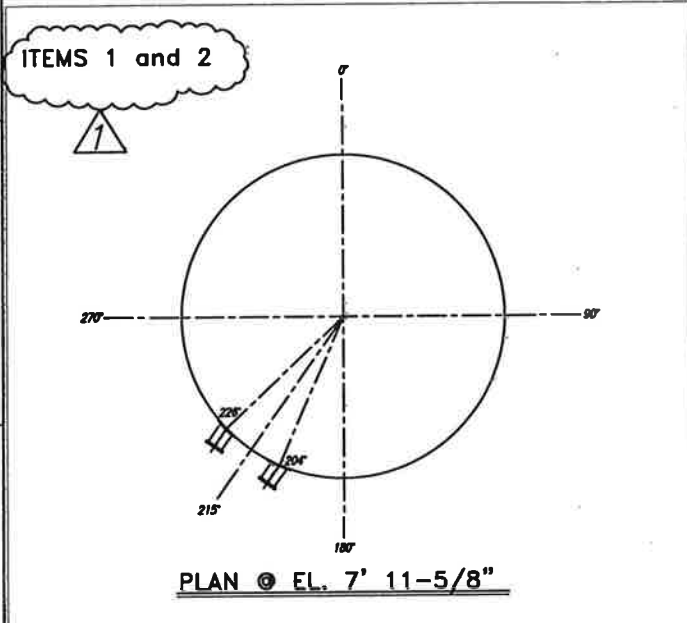
S/c: 2007114 ITEM: C-4201 ONE REQ'D.

SpecFab
Specialty Process Fabricators, Inc.
2353 Haining Road
Vicksburg, Ms 39183
601-636-6888
www.specprofab.com

DESCRIPTION: 120" I.D. x 42'-1" SEAM / SEAM RECTIFIER COLUMN
ITEM: C-4201
PIPE SUPPORTS

CUSTOMER: BUNGE-ERGON VICKSBURG VICKSBURG, MS.

SCALE: NONE	DATE: 11/11/07	P.O. No.:
DRAWN: JS	FILE No.:	
CHECK: JS	DWG. NO. S-074-048	SHEET NO. REV. 7 OF 8 2
APVD:		



REFERENCE DRAWINGS		REVISIONS				
NUMBER	DESCRIPTION	NO.	DESCRIPTION	BY	CHK	DATE
A	ISSUED FOR APPROVAL	JSL	JSL			9/12/07
0	ISSUED FOR CONSTRUCTION	BD	BD			9/26/07
1	ADDED NEW PIPE SUPPORTS	BD	BD			11/09/07
2	AS-BUILT	BD	BD			

NOTICE

THIS DRAWING IS THE PROPERTY OF ERCON, INC. OR ONE OF ITS AFFILIATED COMPANIES ("ERCON"). NO COPIES OR REPRODUCTION OF THIS DRAWING SHALL BE MADE, IN WHOLE OR IN PART, FOR INFORMATION THEREON PUBLISHED OR USED OTHER THAN AS SPECIFICALLY AUTHORIZED BY ERCON IN WRITING. ALL COPIES ARE TO BE RETURNED ON REQUEST OF ERCON.

S/D: 2007114 ITEM: C-4201 ONE REPTD.

SpecFab
Specialty Process Fabricators, Inc.
2353 Haining Road
Vicksburg, MS 39183
601-636-6888
www.specprofab.com

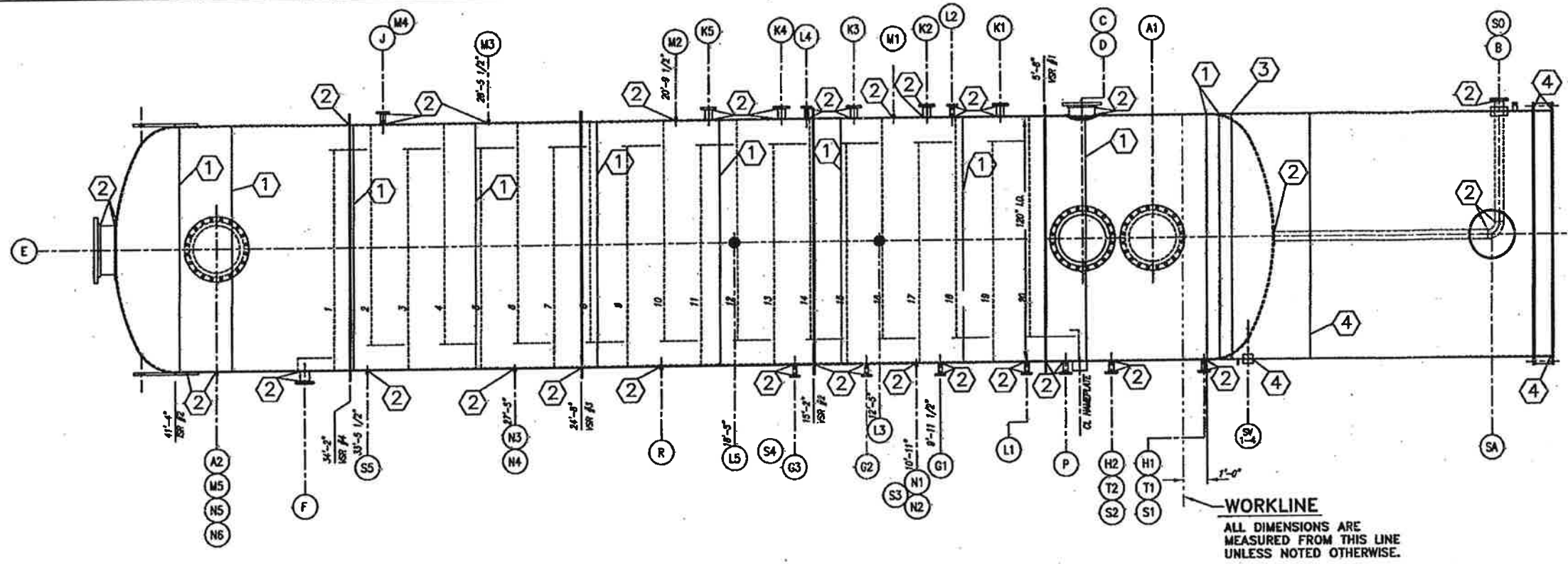
DESCRIPTION: 120" I.D. x 42'-1" SEAM / SEAM RECTIFIER COLUMN
ITEM: C-4201
PIPE SUPPORTS

CUSTOMER: BUNGE-ERCON VICKSBURG
VICKSBURG, MS.

SCALE: NONE DATE: 7/7/07 P.O. No. :
DRAWN: JS FILE No. :
CHECK: JS DWG. NO. : S-074-048 SHEET NO. REV. 7 OF 8 2
APVD:

WELD PROCEDURES

- ① E-154;E-137
- ③ E-138
- ⑤ _____
- ⑦ _____
- ⑨ _____
- ⑪ _____
- ⑬ _____
- ② E-137;E-102;E-148
- ④ E-141;E-142;E-139
- ⑥ _____
- ⑧ _____
- ⑩ _____
- ⑫ _____
- ⑭ _____



ELEVATION
SEE PLAN FOR TRUE ORIENTATION

BILL OF MATERIAL

Bubble #	COMMODITY	QTY.	UM	SIZE	MATL.	DESCRIPTION
1	HEAD	2	EA	120" O.D. X 4375 MM THK	SA-240-304	HEAD, 120" O.D. X 4375 MM THK, 2:1 ELL W 2" SF
2	FLANGE	9	EA	1/2" X 80" X 385"	SA-240-304	FLANGE
3	FLANGE	4	EA	24"	SA-182-F304	24" FLANGE, 150# RFSD
4	BEND FLANGE	2	EA	24"	SA-182-F304	24" BEND FLANGE, 150# RF
5	FLANGE	2	EA	4"	SA-182-F304	4" FLANGE, 150# RFSD
6	FLANGE	7	EA	3"	SA-182-F304	3" FLANGE, 150# RFSD
7	FLANGE	2	EA	2"	SA-182-F304	2" FLANGE, 150# RFSD
8	FLANGE	8	EA	1 1/2"	SA-182-F304	1 1/2" FLANGE, 150# RFSD
9	FLANGE	1	EA	12"	SA-182-F304	12" FLANGE, 150# RFSD
10	HALF COUPLING	13	EA	3/4"	SA-182-F304	3/4" HALF COUPLING, 3000#
11	HALF COUPLING	6	EA	1/2"	SA-182-F304	1/2" HALF COUPLING, 3000#
12	PLATE	2	EA	3/8" X 96" X 400"	A-36	PLATE
13	FLATBAR	3	EA	3/8" X 6" X 144"	SA-240-304	FLATBAR
14	PPE	3	FT	24"	SA-312-T304	24" PPE, SSTD, SMLS
15	PPE	4	FT	3"	SA-312-T304	3" PPE, SSTD, SMLS
16	PPE	2	FT	2"	SA-312-T304	2" PPE, SSTD, SMLS
17	PPE	5	FT	1 1/2"	SA-312-T304	1 1/2" PPE, SSTD, SMLS
18	DAVIT ARM	2	EA	2"	SA-106 B	DAVIT ARM, SSTD, SMLS
19	PPE	2	FT	2 1/2"	SA-106 B	2 1/2" PPE, SSTD, SMLS
20	EYEBOLT	2	EA	3/4" DIA. X 8" LG	CS	EYEBOLT, 1 1/2" EYE
21	NUT	4	EA	3/4" UNC	CS	NUT
22	STUD	40	EA	1 1/4" DIA. X 7 1/2" LG	SA-193 B7	STUD
23	NUT	80	EA	1 1/4" DIA.	SA-193 B7	NUT
24	FLATWASHER	2	EA	3/4" DIA.	CS	FLATWASHER
25	ROD	8	FT	3/4" DIA.	SA-476-304	ROD
26	GASKET	6	EA	3/4"	SA-476-304	GASKET, GARLOCK 3000, 1/8" THK
27	NAMEPLATE BRKT	1	EA	3/16"	SA-240-304	NAMEPLATE BRKT
28	PPE	20	FT	4"	SA-312-T304	4" PPE, SSTD, SMLS
29	ELBOW	1	EA	4"	SA-403-18000	4" ELBOW, SSTD, 90 DEG, LR
30	PPE	1	FT	24"	SA-106 B	24" PPE, SSTD, SMLS
31	GROUNDING LUG	1	EA	3/8" X 2" X 5"	A-36	GROUNDING LUG
32	PPE	2	FT	2"	SA-106 B	2" PPE, SSTD, SMLS
33	PPE	1	FT	8"	SA-106 B	8" PPE, SSTD, SMLS
34	FLATBAR	4	EA	1/2" X 5"	SA-240-304	FLATBAR, ROLLED PER DWG. 114506-1
35	FLATBAR	2	EA	1/2" X 2 1/2"	SA-240-304	FLATBAR, ROLLED PER DWG. 114506-2
36	PLATE	1	EA	3/8" X 48" X 60"	A-36	PLATE
37	PLATE	1	EA	3/8" X 60" X 240"	A-36	PLATE
38	FLATBAR	19	EA	1/4" X 3 1/2"	SA-240-304	FLATBAR, ROLLED PER DWG. 114506-3
39	FLATBAR	1	EA	1/4" X 2 1/2"	SA-240-304	FLATBAR, ROLLED PER DWG. 114506-4
40	PLATE	1	EA	1/4" X 48" X 60"	SA-240-304	PLATE
41	PLATE	1	EA	1 1/8" X 30" X 36"	SA-240-304	PLATE
42	PPE	1	FT	12"	SA-312-T304	12" PPE, SSTD, SMLS
43	GASKET	1	EA	12"	SA-476-304	12" GASKET, GARLOCK 3000, 1/8" THK
44	GASKET	7	EA	3"	SA-476-304	3" GASKET, GARLOCK 3000, 150# 1/8" THK
45	GASKET	2	EA	2"	SA-476-304	2" GASKET, GARLOCK 3000, 150# 1/8" THK
46	GASKET	8	EA	1 1/2"	SA-476-304	1 1/2" GASKET, GARLOCK 3000, 150# 1/8" THK
47	GASKET	2	EA	4"	SA-476-304	4" GASKET, GARLOCK 3000, 150# 1/8" THK
48	PLATE	1	EA	1" X 7 1/2" X 120"	A-36	PLATE
49	TALKING LUG	1	EA	2" X 7 1/2" X 3 1/2"	A-36	PLATE

FOR CUSTOMER USE

DATE: 2007114 ITEM: C-4201 ONE REV.:

SpecFab
Specialty Process Fabricators, Inc.
2353 Haining Road
Vicksburg, Ms 39183
601-636-6888
www.specprofab.com

DESCRIPTION: **120" I.D. X 42'-1" SEAM/SEAM RECTIFIER COLUMN**
ITEM: C4201
WELD MAP

CUSTOMER: **BUNGE-ERGON VICKSBURG VICKSBURG, MS.**

SCALE: N.T.S.	DATE: 7-5-07	P.D. No.: 61310-4500140663
DRAWN: BFT	FILE No.: 2007114	
CHECK: DM	DWG. NO. V-074-105	SHEET NO. REV. 6 OF 6 0
APVD: DM	7-5-07	

REFERENCE DRAWINGS		REVISIONS			
NUMBER	DESCRIPTION	BY	CHK	DATE	REV
0	ISSUED FOR CONSTRUCTION	BFT	DM	7-3-07	

NOTICE

THIS DRAWING IS THE PROPERTY OF EROON, INC. OR ONE OF ITS AFFILIATED COMPANIES ("ERON"). NO COPIES OF OR REPRODUCTION OF THIS DRAWING SHALL BE MADE, IN WHOLE OR IN PART, NOR INFORMATION THEREON FURNISHED OR USED OTHER THAN AS SPECIFICALLY AUTHORIZED BY EROON IN WRITING. ALL COPIES ARE TO BE RETURNED ON REQUEST OF EROON.

ORIGINATION: BRAD THOMAS

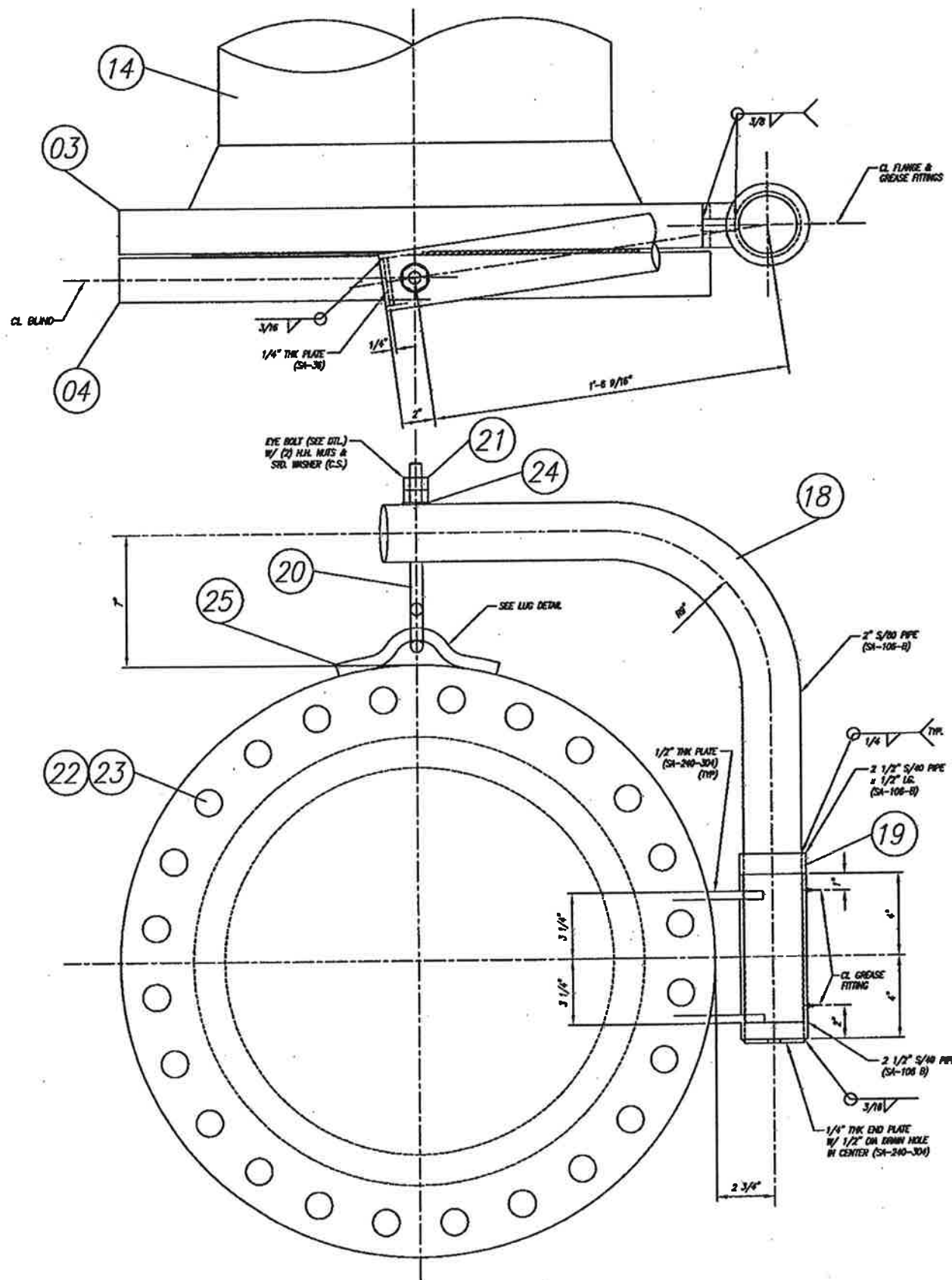
DATE: _____ REV: 0

S/O NUMBER: _____

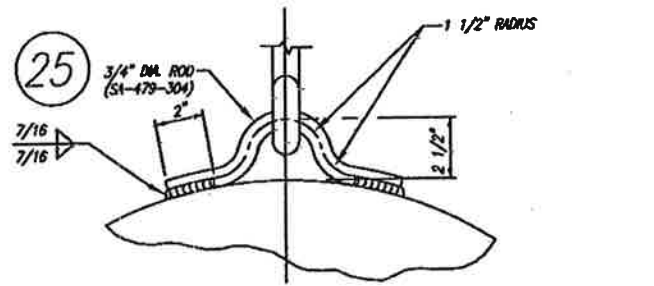
CUSTOMER: _____

PO NUMBER: 61310-4500140663

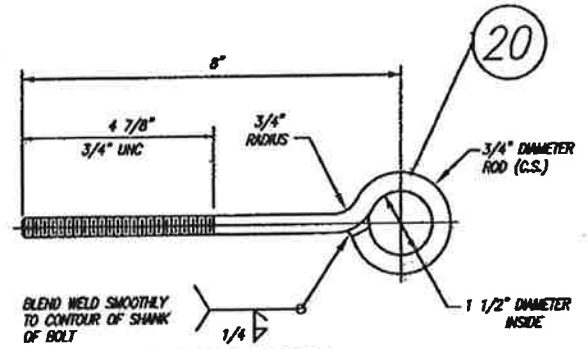
ITEM NUMBER: C 4201



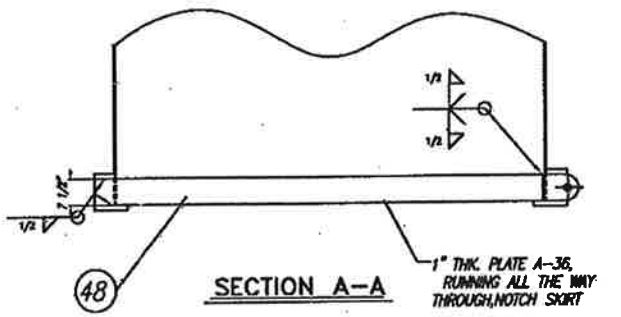
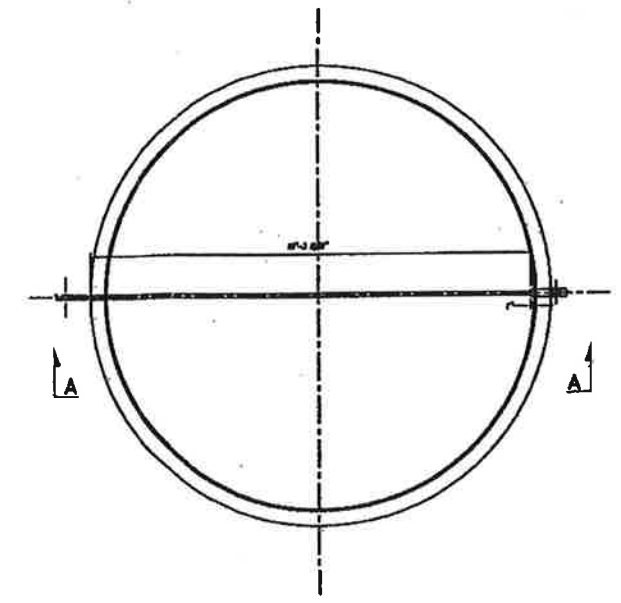
DETAIL DAVIT
(2-REV'D.)



LUG DETAIL
(2-REV'D.)



EYE BOLT DETAIL
(2-REV'D.)



TAILING LUG DETAIL

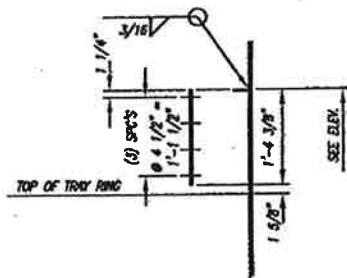
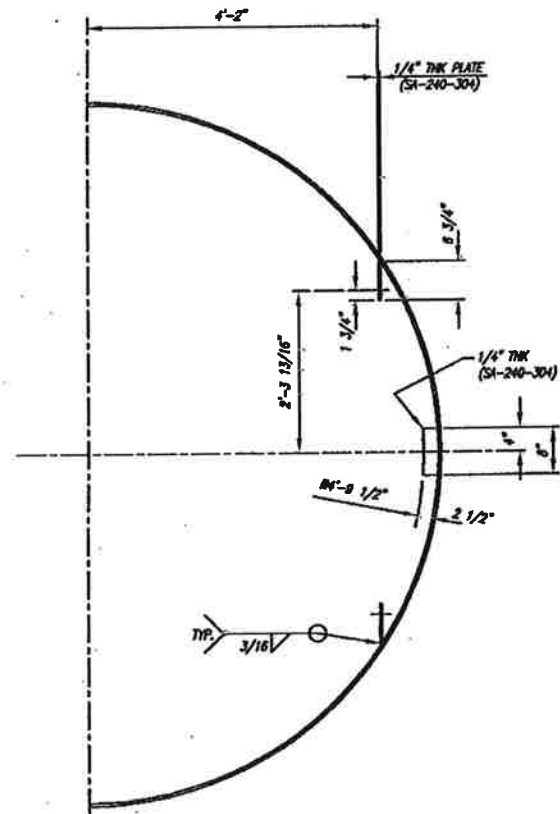
REFERENCE DRAWINGS		REVISIONS			
NUMBER	DESCRIPTION	NO.	DESCRIPTION	BY	DATE
B	ISSUED FOR APPROVAL	JSL	JSL		
D	ISSUED FOR CONSTRUCTION	JSL	JSL		4/23/07

NOTICE
THIS DRAWING IS THE PROPERTY OF ERGON, INC. OR ONE OF ITS AFFILIATED COMPANIES ("ERGON"). NO COPIES OF OR REPRODUCTIONS OF THIS DRAWING SHALL BE MADE, IN WHOLE OR IN PART, FOR INFORMATION THEREON PUBLISHED OR LOANED OTHER THAN AS SPECIFICALLY AUTHORIZED BY ERGON IN WRITING. ALL COPIES ARE TO BE RETURNED ON REQUEST OF ERGON.

S/N: 2007114	ITEM: C-4201	ONE	REV'D.
		Specialty Process Fabricators, Inc. 2353 Haining Road Vicksburg, Ms 39183 601-636-6888 www.specprofab.com	
DESCRIPTION : 120" I.D. x 42'-1" SEAM / SEAM RECTIFIER COLUMN ITEM: C-4201			
CUSTOMER: ERGON REFINING VICKSBURG, MS.			
SCALE : NONE	DATE : 2/27/07	P.O. No. : 61310-450014663	
DRAWN : JSL	2/27/07	FILE No. : 2007114	
CHECK : JSL	2/20/07	DWG. NO. : V-074-105	SHEET NO. : 3 OF 6
APVD :			REV. : 0

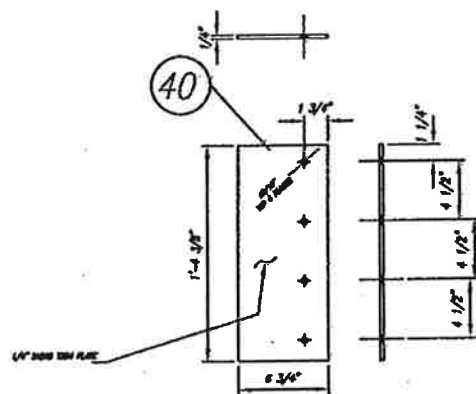
PLAN OF FALSE DOWNCOMER SUPPORT

SEE PLAN FOR TRUE ORIENTATION



ELEVATION OF FALSE DOWNCOMER SUPPORT

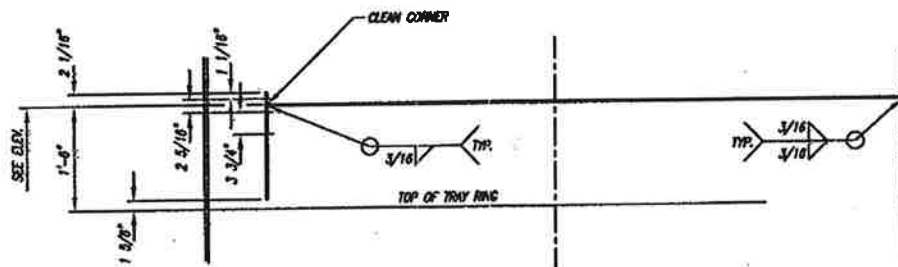
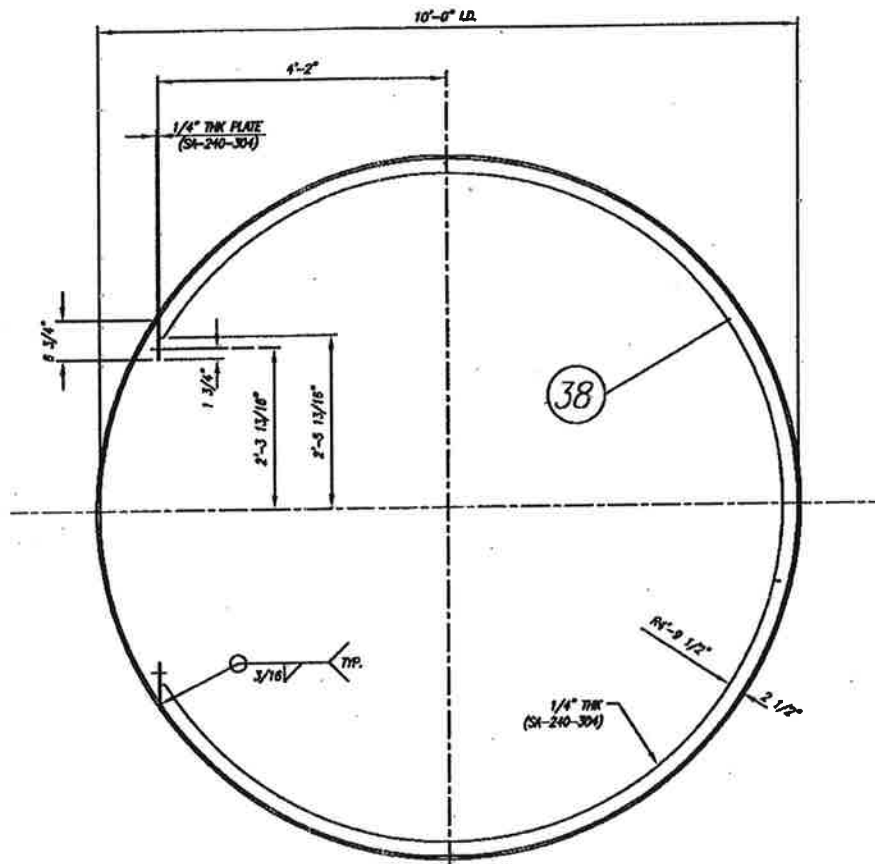
SEE BOLT BAR DETAIL SHOWN BELOW FOR FABRICATION DETAILS



BOLT BAR DETAIL

PLAN OF TRAY SUPPORT #1 THRU 19

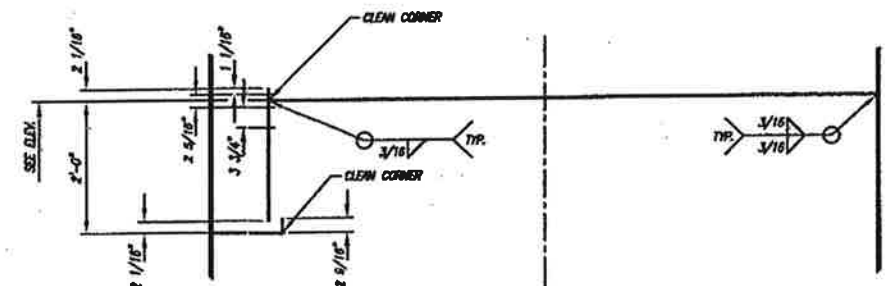
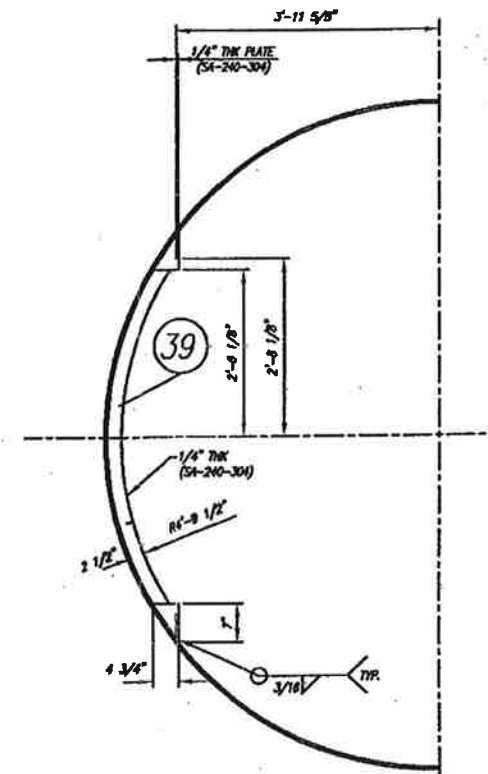
SEE PLAN FOR TRUE ORIENTATION



ELEVATION OF TRAY SUPPORT #1 THRU 19

PLAN OF TRAY SUPPORT #20 & SEAL PAN

SEE PLAN FOR TRUE ORIENTATION

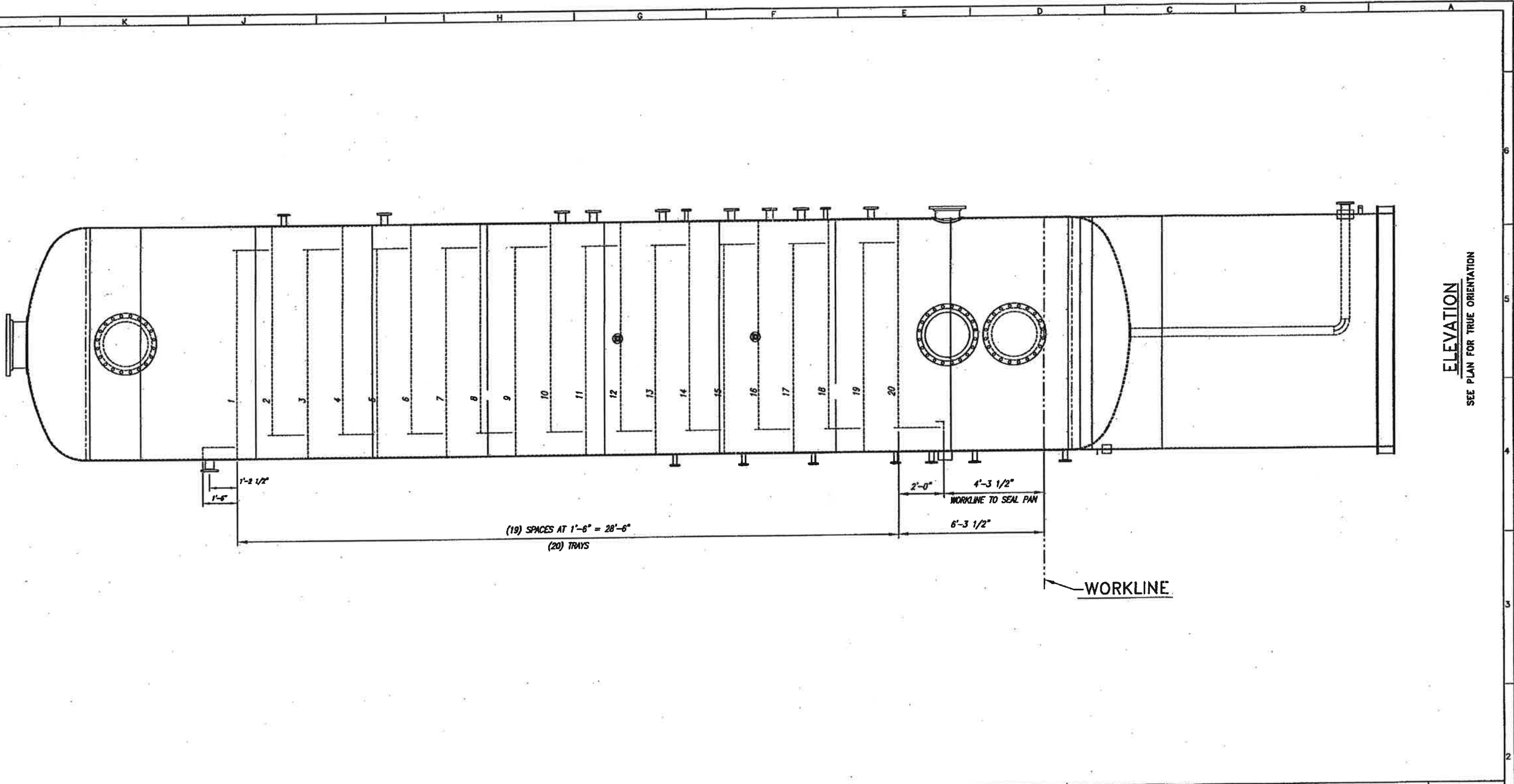


ELEVATION OF TRAY SUPPORT #20 & SEAL PAN

REFERENCE DRAWINGS		REVISIONS			
NUMBER	DESCRIPTION	BY	CHK	DATE	
A	ISSUED FOR APPROVAL	JSL	JSL		
0	ISSUED FOR CONSTRUCTION	SBT	BM	7-3-07	

NOTICE
THIS DRAWING IS THE PROPERTY OF ERGON, INC. OR ONE OF ITS AFFILIATED COMPANIES ("ERGON"). NO COPIES OF OR REPRODUCTION OF THIS DRAWING SHALL BE MADE, IN WHOLE OR IN PART, NOR INFORMATION THEREIN PUBLISHED OR USED OTHER THAN AS SPECIFICALLY AUTHORIZED BY ERGON IN WRITING. ALL COPIES ARE TO BE RETURNED ON REQUEST OF ERGON.

S/C: 2007114	ITEM: C-4201	ONE	REV'D.
		Specialty Process Fabricators, Inc. 2353 Haining Road Vicksburg, Ms 39183 601-536-6888 www.specprofab.com	
DESCRIPTION: 120" I.D. x 42'-1" SEAM / SEAM RECTIFIER COLUMN ITEM: C-4201			
CUSTOMER: ERGON REFINING VICKSBURG, MS.			
SCALE: NONE	DATE: 4/29/07	P.O. No.: 61310-450014683	
DRAWN: JSL	FILE No.: 2007114		
CHECK: JSL	4/24/07	DWG. NO. V-074-105	SHEET NO. REV. 4 OF 6 0
APVD:			

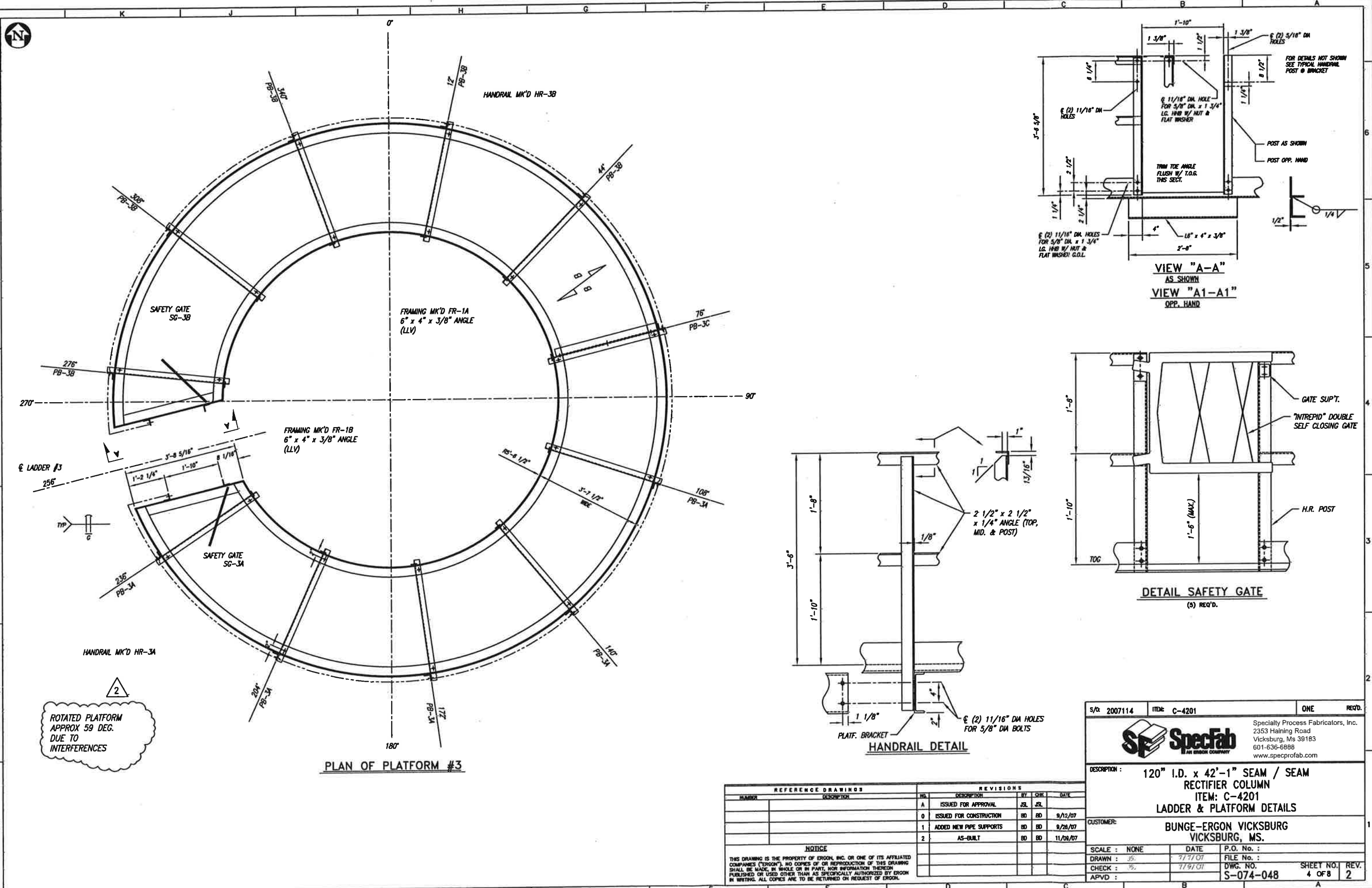


ELEVATION
SEE PLAN FOR TRUE ORIENTATION

REFERENCE DRAWINGS		REVISIONS			
NO.	DESCRIPTION	BY	CHK	DATE	
A	ISSUED FOR APPROVAL	JSL	JSL		
B	ISSUED FOR CONSTRUCTION	BFT	DM	7-3-07	

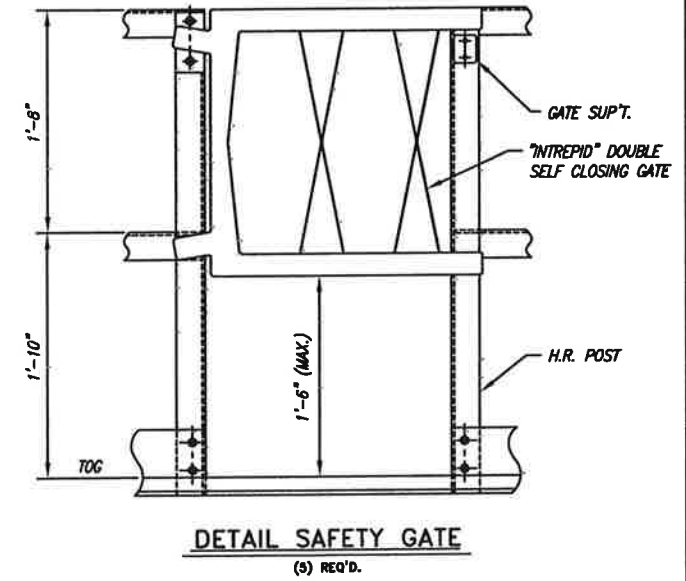
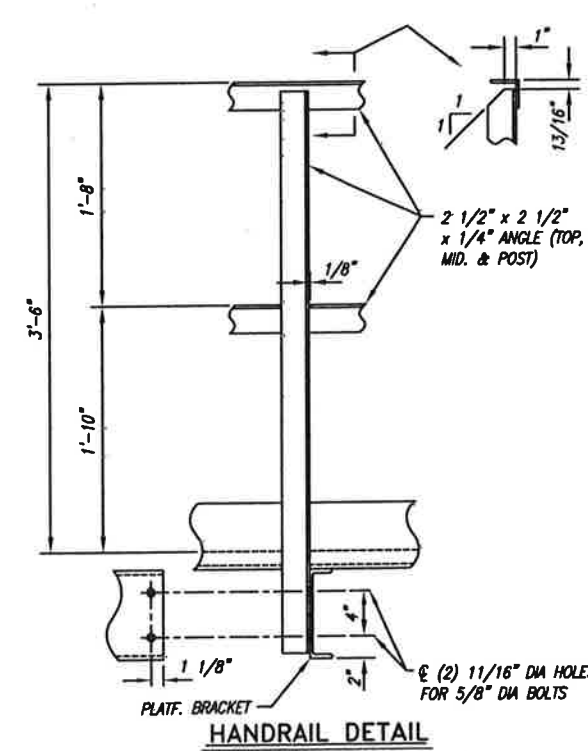
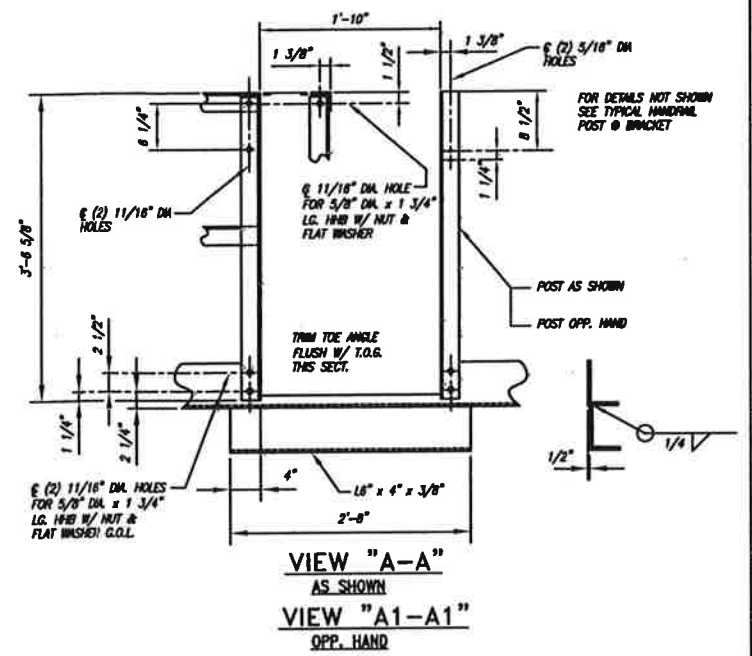
NOTICE
THIS DRAWING IS THE PROPERTY OF EROOH, INC. OR ONE OF ITS AFFILIATED COMPANIES ("EROOH"). NO COPIES OF OR REPRODUCTION OF THIS DRAWING SHALL BE MADE, IN WHOLE OR IN PART, NOR INFORMATION THEREIN PUBLISHED OR USED OTHER THAN AS SPECIFICALLY AUTHORIZED BY EROOH IN WRITING. ALL COPIES ARE TO BE RETURNED ON REQUEST OF EROOH.

S/O: 2007114	ITEM: C-4201	ONE	REV'D.
SpecFab <small>AN EROOH COMPANY</small>		Specialty Process Fabricators, Inc. 2353 Haining Road Vicksburg, Ms 39183 601-636-6888 www.specprofab.com	
DESCRIPTION: 120" I.D. x 42'-1" SEAM / SEAM RECTIFIER COLUMN ITEM: C-4201			
CUSTOMER: ERGON REFINING VICKSBURG, MS.			
SCALE: NONE	DATE: 4/25/07	P.O. No.: 61310-450014663	
DRAWN: JSL	4/25/07	FILE No.: 2007114	
CHECK: JSL	4/24/07	DWG. NO. V-074-105	SHEET NO. 5 OF 6
APVD:			REV. 0



2
 ROTATED PLATFORM
 APPROX 59 DEG.
 DUE TO
 INTERFERENCES

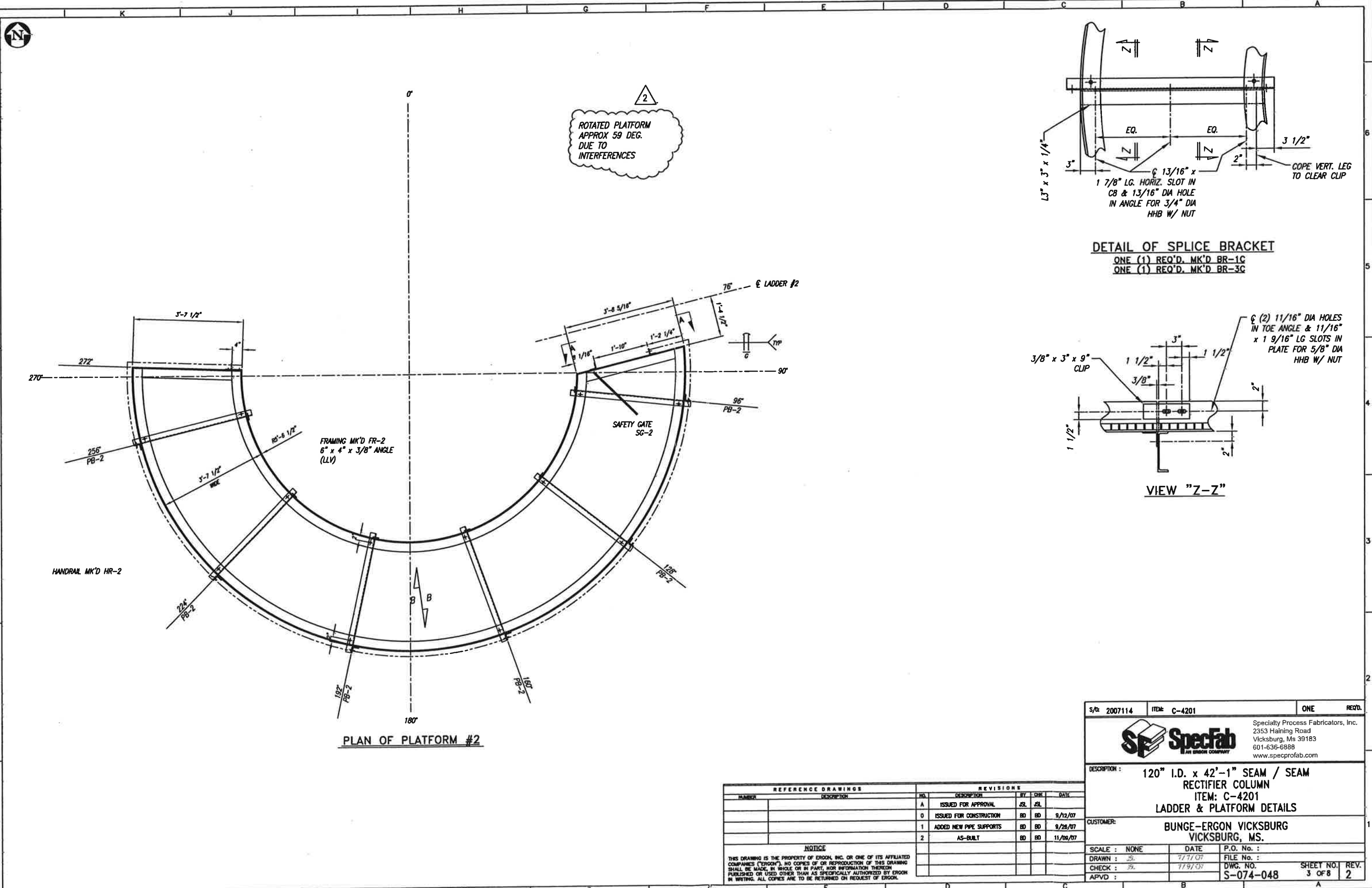
PLAN OF PLATFORM #3



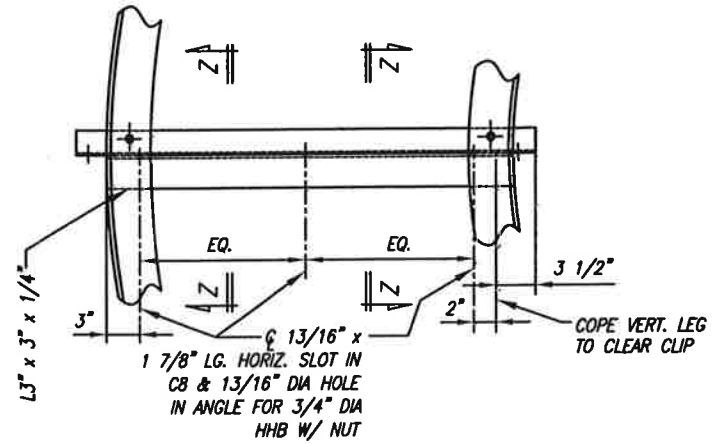
REFERENCE DRAWINGS		REVISIONS			
NUMBER	DESCRIPTION	NO.	DESCRIPTION	BY	DATE
A	ISSUED FOR APPROVAL	JSL	JSL		
0	ISSUED FOR CONSTRUCTION	BD	BD		9/12/07
1	ADDED NEW PIPE SUPPORTS	BD	BD		9/26/07
2	AS-BUILT	BD	BD		11/09/07

NOTICE
 THIS DRAWING IS THE PROPERTY OF EROON, INC. OR ONE OF ITS AFFILIATED COMPANIES ("EROON"). NO COPIES OF OR REPRODUCTION OF THIS DRAWING SHALL BE MADE, IN WHOLE OR IN PART, FOR INFORMATION THEREON, PUBLISHED OR USED OTHER THAN AS SPECIFICALLY AUTHORIZED BY EROON IN WRITING. ALL COPIES ARE TO BE RETURNED ON REQUEST OF EROON.

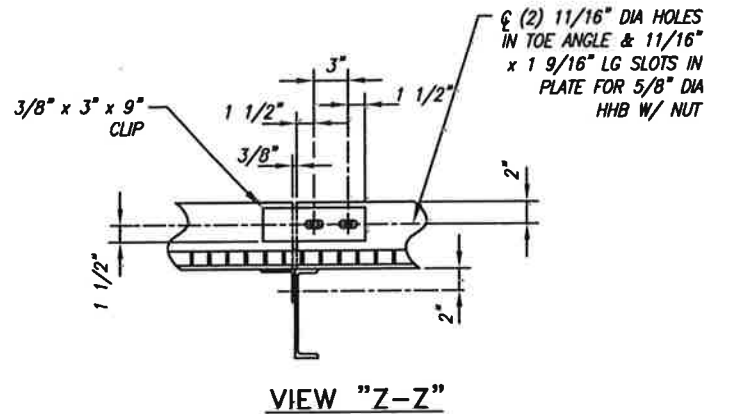
S/CR: 2007114	ITEM: C-4201	ONE	REQ'D.
		Specialty Process Fabricators, Inc. 2353 Haining Road Vicksburg, MS 39183 601-636-6888 www.specprofab.com	
		DESCRIPTION: 120" I.D. x 42'-1" SEAM / SEAM RECTIFIER COLUMN ITEM: C-4201 LADDER & PLATFORM DETAILS	
CUSTOMER: BUNGE-ERGON VICKSBURG VICKSBURG, MS.			
SCALE: NONE	DATE: 7/7/07	P.O. No.:	
DRAWN: JS	FILE No.:	DWG. NO.:	
CHECK: JS	7/9/07	S-074-048	
APVD:		SHEET NO. 4 OF 8	REV. 2



2
 ROTATED PLATFORM
 APPROX 59 DEG.
 DUE TO
 INTERFERENCES



DETAIL OF SPLICE BRACKET
 ONE (1) REQ'D. MK'D BR-1C
 ONE (1) REQ'D. MK'D BR-3C

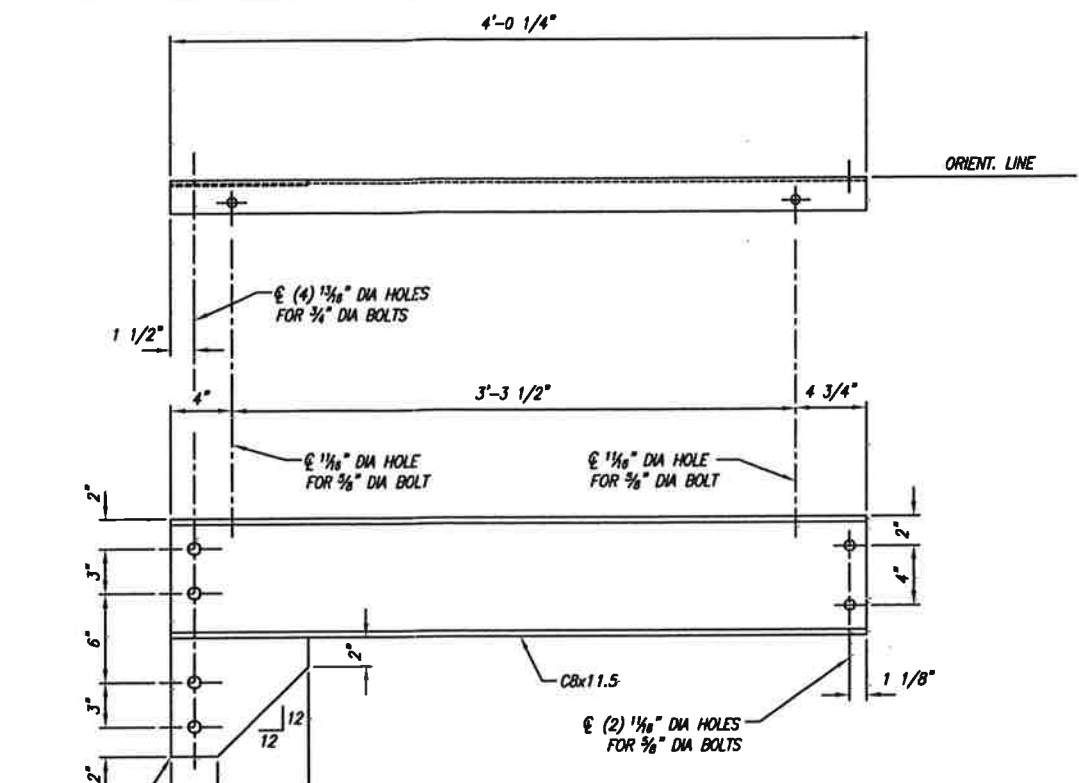
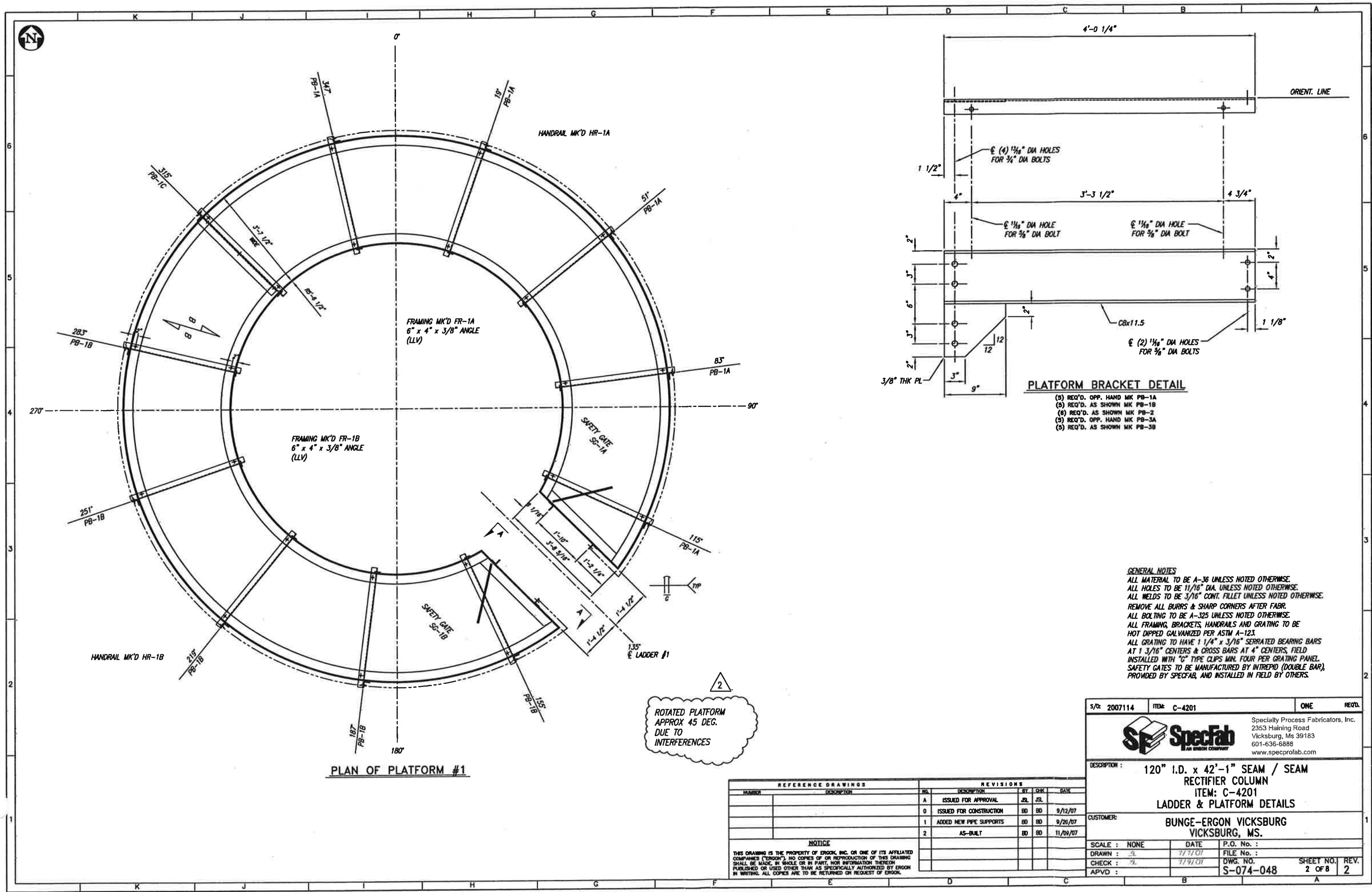


PLAN OF PLATFORM #2

REFERENCE DRAWINGS		REVISIONS				
NUMBER	DESCRIPTION	NO.	DESCRIPTION	BY	CHK	DATE
A	ISSUED FOR APPROVAL	JSL	JSL			
0	ISSUED FOR CONSTRUCTION	BD	BD			9/12/07
1	ADDED NEW PIPE SUPPORTS	BD	BD			9/26/07
2	AS-BUILT	BD	BD			11/09/07

NOTICE
 THIS DRAWING IS THE PROPERTY OF ERCON, INC. OR ONE OF ITS AFFILIATED COMPANIES ("ERCON"). NO COPIES OR REPRODUCTION OF THIS DRAWING SHALL BE MADE, IN WHOLE OR IN PART, NOR INFORMATION THEREON PUBLISHED OR USED OTHER THAN AS SPECIFICALLY AUTHORIZED BY ERCON IN WRITING. ALL COPIES ARE TO BE RETURNED ON REQUEST OF ERCON.

S/O: 2007114	ITEM: C-4201	ONE	REQ'D.
		Specialty Process Fabricators, Inc. 2353 Haining Road Vicksburg, Ms 39183 601-636-6888 www.specprofab.com	
		DESCRIPTION: 120" I.D. x 42'-1" SEAM / SEAM RECTIFIER COLUMN ITEM: C-4201 LADDER & PLATFORM DETAILS	
CUSTOMER: BUNGE-ERCON VICKSBURG VICKSBURG, MS.			
SCALE: NONE	DATE: 7/7/07	P.O. No.:	
DRAWN: JSL	7/7/07	FILE No.:	
CHECK: JS	7/9/07	DWG. NO. S-074-048	SHEET NO. 3 OF 8
APVD:			REV. 2



PLATFORM BRACKET DETAIL

- (3) REQ'D. OPP. HAND MK PB-1A
- (5) REQ'D. AS SHOWN MK PB-1B
- (6) REQ'D. AS SHOWN MK PB-2
- (3) REQ'D. OPP. HAND MK PB-3A
- (5) REQ'D. AS SHOWN MK PB-3B

GENERAL NOTES
 ALL MATERIAL TO BE A-36 UNLESS NOTED OTHERWISE.
 ALL HOLES TO BE 11/16" DIA. UNLESS NOTED OTHERWISE.
 ALL WELDS TO BE 3/16" CONT. FILLET UNLESS NOTED OTHERWISE.
 REMOVE ALL BURRS & SHARP CORNERS AFTER FABR.
 ALL BOLTING TO BE A-325 UNLESS NOTED OTHERWISE.
 ALL FRAMING, BRACKETS, HANDRAILS AND GRATING TO BE HOT DIPPED GALVANIZED PER ASTM A-123.
 ALL GRATING TO HAVE 1 1/4" x 3/16" SERRATED BEARING BARS AT 1 3/16" CENTERS & CROSS BARS AT 4" CENTERS. FIELD INSTALLED WITH "C" TYPE CLIPS MIN. FOUR PER GRATING PANEL. SAFETY GATES TO BE MANUFACTURED BY INTREPID (DOUBLE BAR), PROVIDED BY SPECIFAB, AND INSTALLED IN FIELD BY OTHERS.

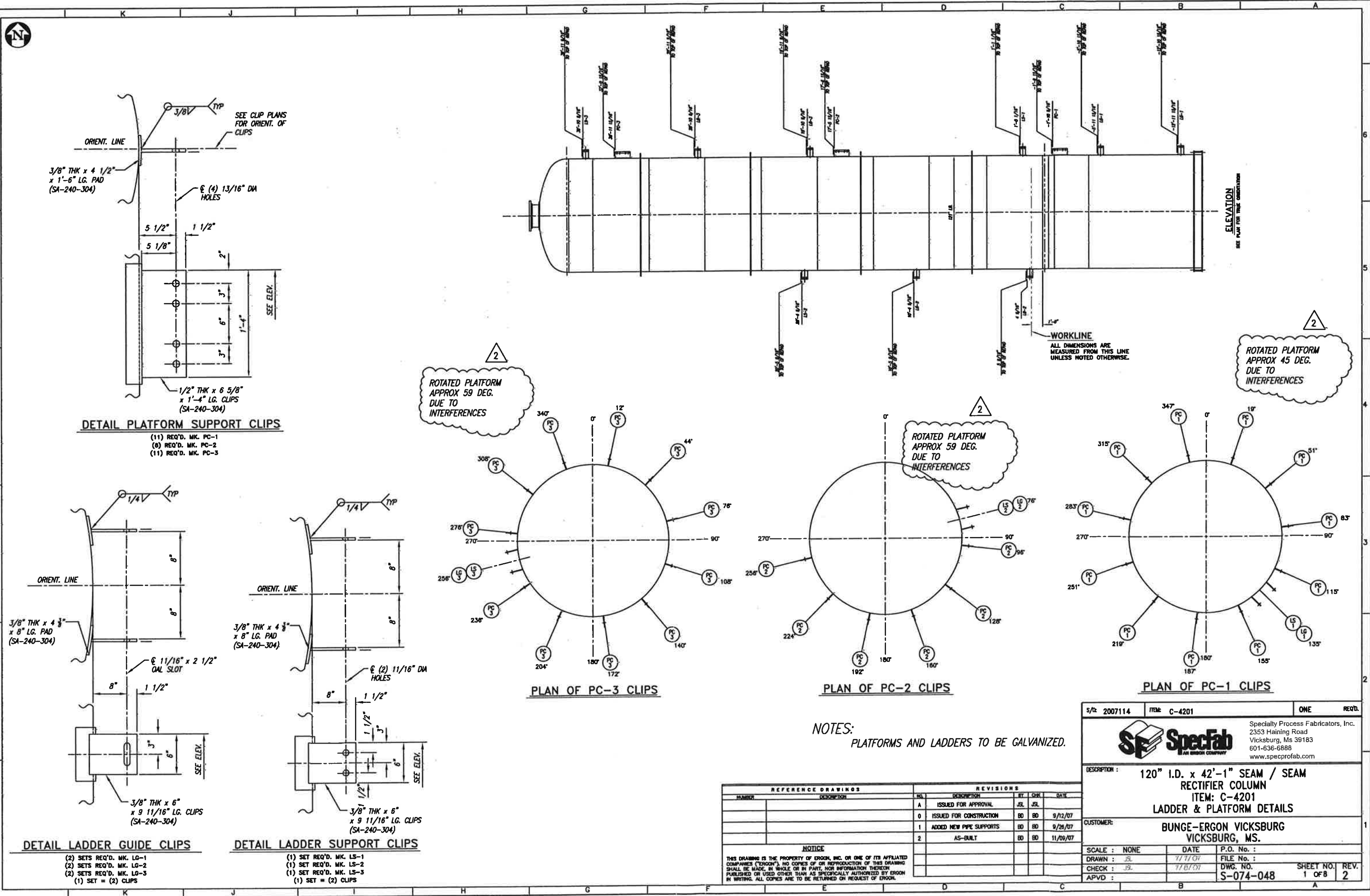
2
 ROTATED PLATFORM APPROX 45 DEG. DUE TO INTERFERENCES

PLAN OF PLATFORM #1

REFERENCE DRAWINGS		REVISIONS				
HATCH	DESCRIPTION	NO.	DESCRIPTION	BY	CHK	DATE
		A	ISSUED FOR APPROVAL	JL	JL	
		0	ISSUED FOR CONSTRUCTION	BD	BD	9/12/07
		1	ADDED NEW PIPE SUPPORTS	BD	BD	9/26/07
		2	AS-BUILT	BD	BD	11/09/07

NOTICE
 THIS DRAWING IS THE PROPERTY OF ERCON, INC. OR ONE OF ITS AFFILIATED COMPANIES ("ERCON"). NO COPIES OR REPRODUCTION OF THIS DRAWING SHALL BE MADE, IN WHOLE OR IN PART, NOR INFORMATION THEREON PUBLISHED OR USED OTHER THAN AS SPECIFICALLY AUTHORIZED BY ERCON IN WRITING. ALL COPIES ARE TO BE RETURNED ON REQUEST OF ERCON.

S/O: 2007114	ITEM: C-4201	ONE	REQ'D.
		Specialty Process Fabricators, Inc. 2353 Haining Road Vicksburg, Ms 39183 601-636-6888 www.specprofab.com	
		DESCRIPTION: 120" I.D. x 42'-1" SEAM / SEAM RECTIFIER COLUMN ITEM: C-4201 LADDER & PLATFORM DETAILS	
CUSTOMER:		BUNGE-ERCON VICKSBURG VICKSBURG, MS.	
SCALE: NONE	DATE: 7/11/07	P.O. No.:	
DRAWN: JL	7/11/07	FILE No.:	
CHECK: JL	7/19/07	DWG. No.:	SHEET NO. REV.
APVD:		S-074-048	2 OF 8 2



DETAIL PLATFORM SUPPORT CLIPS

- (11) REQ'D. MK. PC-1
- (8) REQ'D. MK. PC-2
- (11) REQ'D. MK. PC-3

PLAN OF PC-3 CLIPS

PLAN OF PC-2 CLIPS

PLAN OF PC-1 CLIPS

NOTES:
 PLATFORMS AND LADDERS TO BE GALVANIZED.

REFERENCE DRAWINGS		REVISIONS				
NUMBER	DESCRIPTION	NO.	DESCRIPTION	BY	CHK.	DATE
A	ISSUED FOR APPROVAL	JSL	JSL			
0	ISSUED FOR CONSTRUCTION	BD	BD			9/12/07
1	ADDED NEW PIPE SUPPORTS	BD	BD			9/26/07
2	AS-BUILT	BD	BD			11/09/07

NOTICE
 THIS DRAWING IS THE PROPERTY OF EROON, INC. OR ONE OF ITS AFFILIATED COMPANIES ("EROON"). NO COPIES OF OR REPRODUCTION OF THIS DRAWING SHALL BE MADE, IN WHOLE OR IN PART, FOR INFORMATION THEREON PUBLISHED OR USED OTHER THAN AS SPECIFICALLY AUTHORIZED BY EROON IN WRITING. ALL COPIES ARE TO BE RETURNED ON REQUEST OF EROON.

S/O: 2007114	ITEM: C-4201	ONE	REQ'D.
SpecFab AN EROON COMPANY		Specialty Process Fabricators, Inc. 2353 Haining Road Vicksburg, Ms 39183 601-636-6888 www.specprofab.com	
DESCRIPTION: 120" I.D. x 42'-1" SEAM / SEAM RECTIFIER COLUMN ITEM: C-4201 LADDER & PLATFORM DETAILS			
CUSTOMER: BUNGE-ERGON VICKSBURG VICKSBURG, MS.			
SCALE: NONE	DATE: 11/11/07	P.O. No.:	
DRAWN: JSL	11/11/07	FILE No.:	
CHECK: JSL	11/16/07	DWG. NO.:	S-074-048
APVD:		SHEET NO.:	1 OF 8
		REV.:	2

DETAIL LADDER GUIDE CLIPS

- (2) SETS REQ'D. MK. LG-1
- (2) SETS REQ'D. MK. LG-2
- (2) SETS REQ'D. MK. LG-3
- (1) SET = (2) CLIPS

DETAIL LADDER SUPPORT CLIPS

- (1) SET REQ'D. MK. LS-1
- (1) SET REQ'D. MK. LS-2
- (1) SET REQ'D. MK. LS-3
- (1) SET = (2) CLIPS